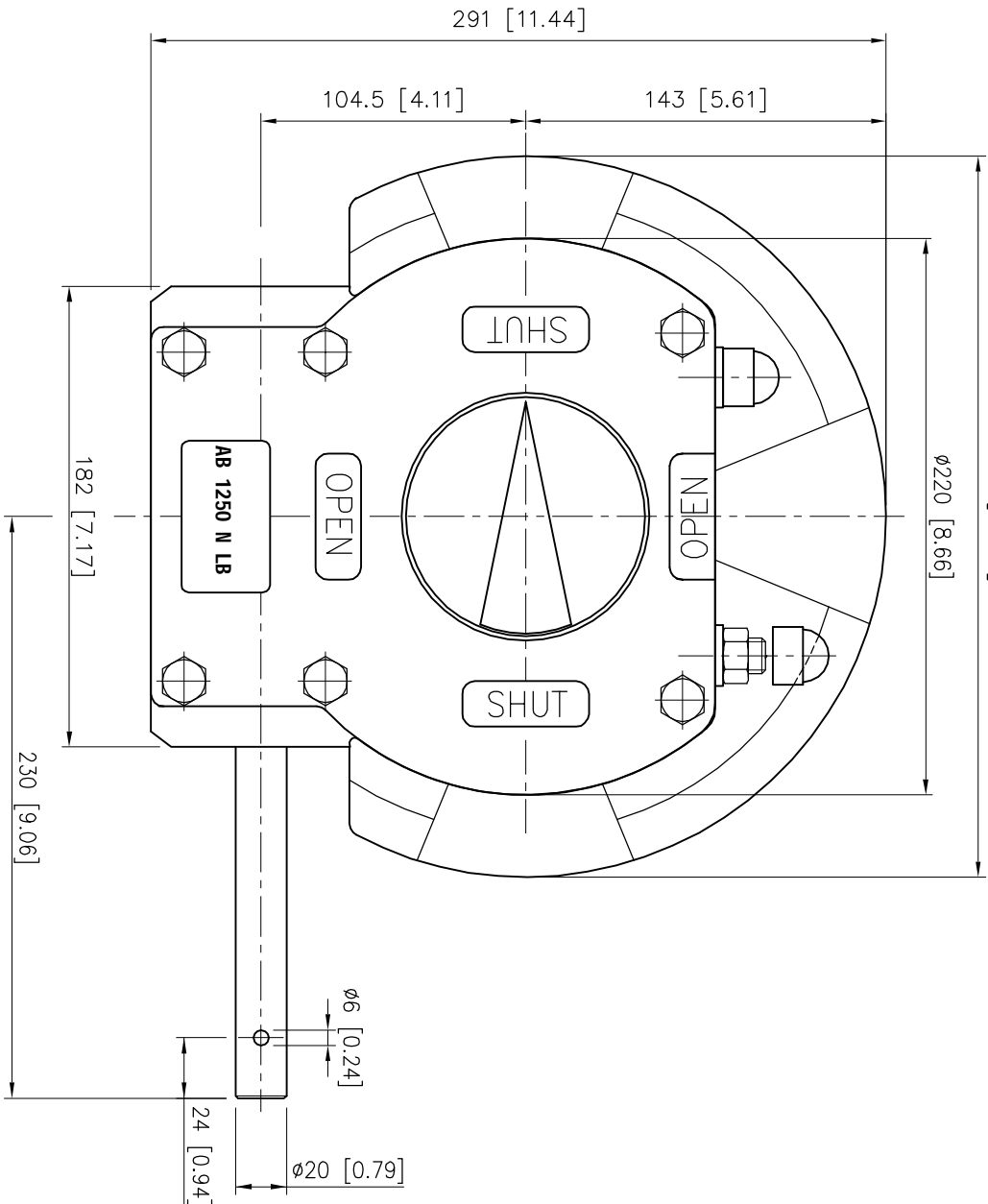
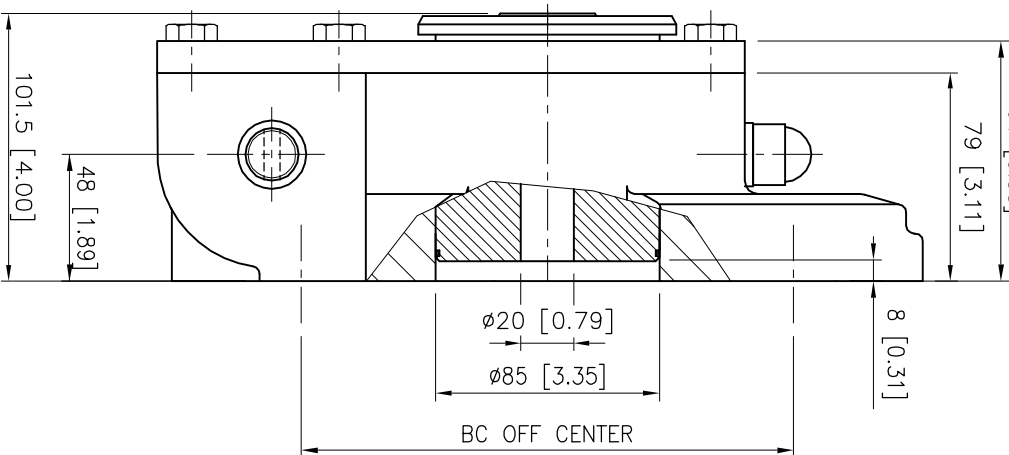


285 [11.22]

∅220 [8.66]



Max.STEM height
91 [3.58]



DESCRIPTION

TRAVEL : -5° to 95° adjustable
 RATIO : 55 : 1
 TURNS TO CLOSE : 13.75
 WEIGHT : 27.5kg.(60.6lb) excl.handwheel

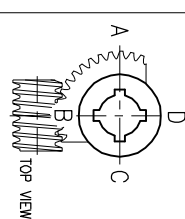
MOUNTINGHOLES

BOLT CIRCLE : min. ∅102 [4.02]
 (OFF CENTER) max. ∅254 [10]
 ecc. ISO 5211 : F10/12/14/16/25
 BORE : min.20[0.79] max.∅65[2.56] #50[1.97]

TORQUE

max.OUTPUT : 3250 Nm (28765 lbf.in.)
 max.INPUT : 171 Nm (1514 lbf.in.)
 M.A. : 19 ±15%

KEYWAY POSITION OF GEARBOX
 SHOWN IN CLOSED POSITION



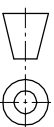
Dimensions in MM [inch]

rotork gears

Nijenheidestraat 25
7581 PV Losser
The Netherlands

GEARBOX AB 1250 N LB

THIS DOCUMENT IS PROPERTY OF ROTORK GEARS. NEITHER THIS OR ITS CONTENT MAY BE COPIED OR USED IN ANY OTHER WAY PERMITTED BY THE INTERNSHIP OF ROTORK GEARS. ANY PART OF THIS DOCUMENT SHALL CONSTITUTE A KNOWLEDGE ELEMENT OF THE FOREGOING CONDITIONS



Drawn : S.B.

Dwg Nr.: D05N LB-001

Date : 06-11-2009

Rev.: 01