

F30 BASE DETAILS

8 HOLES M20x2.5x35 DEEP,
EQUI-SPACED AS SHOWN
(MKS 3P102-F30)
(13D5210-F30)

Ø229
229.58
Ø230.0

22.5°

Ø350
13.78"

Ø5.995
5.995

F425 BASE DETAILS

4 HOLES 5/8" UNC THRO
EQUI-SPACED AS SHOWN
(MKS 3P102-F425)

22.5°

Ø300
11.81"

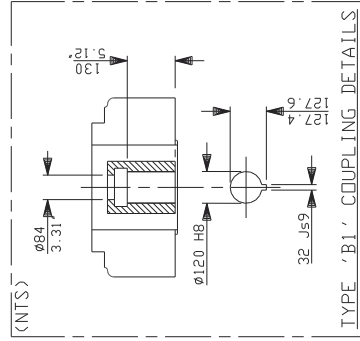
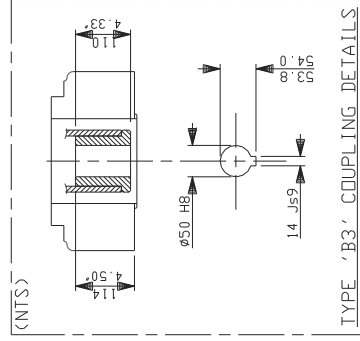
F425 BASE DETAILS

8 HOLES M16x20 THRO
EQUI-SPACED AS SHOWN
DN A 254 FCD
(13D5210-F25)

Ø199
199.68
Ø200.0

22.5°

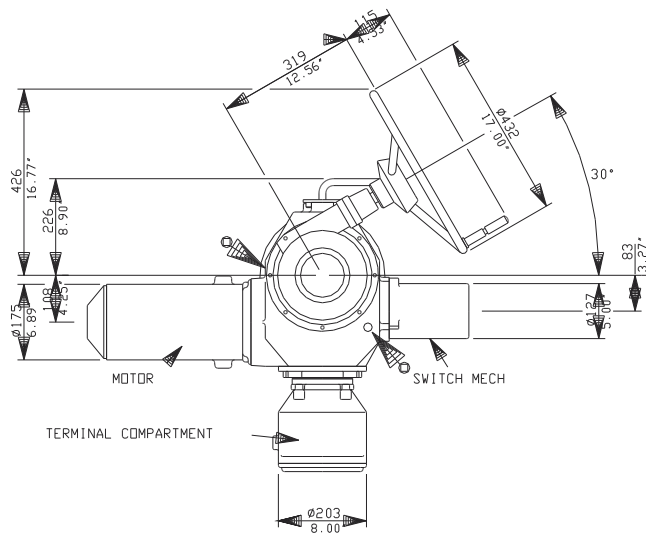
Ø300
11.81"



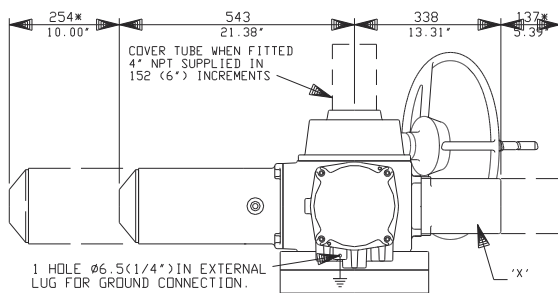
rotork Rotor Controls Ltd.
Bath, England BA1 3JD
Bath 01225/733200

90A BASE + COUPS

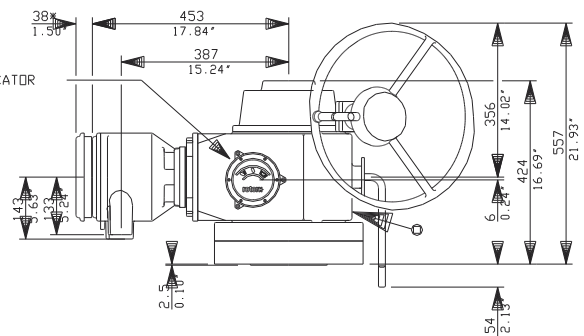
Date 14/10/97



90A SYNCROSET WITH STANDARD HANDWHEEL

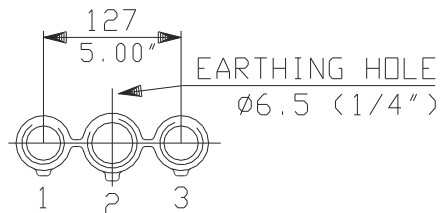


POSITION INDICATOR

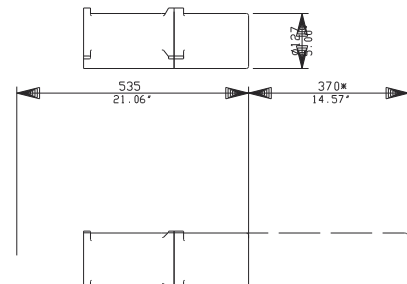


ADD-ON-PAK 1
REPLACES 'X' &
SWITCH MECH IF REQUIRED.

CONDUIT ENTRIES (N.T.S)



Nos.1 & 3 TAPPED 1 1/4" NPT
No.2 TAPPED 1 1/2" NPT
STANDARD ALTERNATIVES IF SPECIFIED
2 X M32, 1 X M40
2 X PG16, 1 X PG29



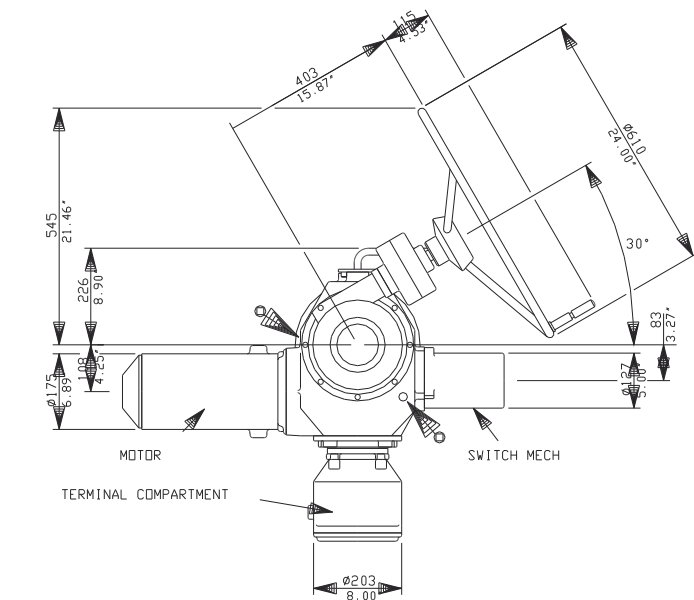
rotork

Rotork Controls Ltd.
Bath, England BA1 3JD
Bath (01225) 733200

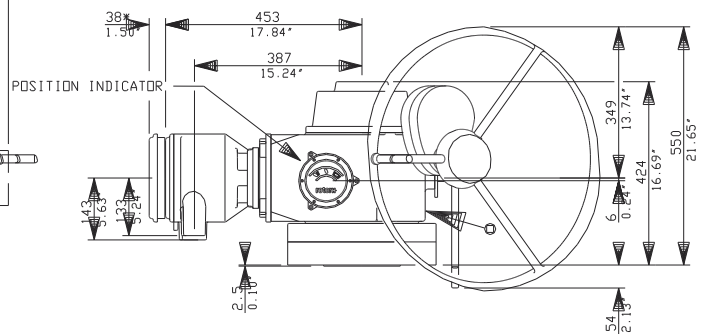
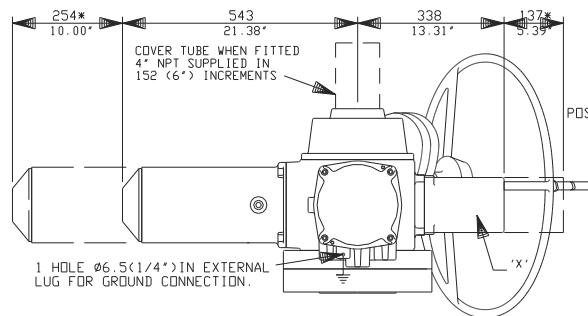
90A(SHW) DATA

Date 141097

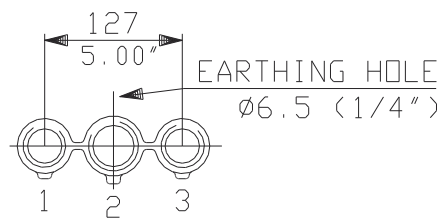
A90S



90A SYNCROSET WITH OPTIONAL SPURRED SIDE HANDWHEEL

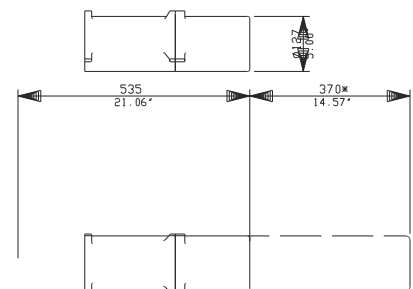


CONDUIT ENTRIES (N.T.S)



Nos.1 & 3 TAPPED 1 1/4" NPT
No.2 TAPPED 1 1/2" NPT
STANDARD ALTERNATIVES IF SPECIFIED
2 X M32,1 X M40
2 X PG16,1 X PG29

ADD-ON-PAK 1
REPLACES 'X' &
SWITCH MECH IF REQUIRED.



rotork

Rotork Controls Ltd.
Bath, England BA1 3JQ
Bath (01225)733200

90A<SSH> DATA

Date 141097

A90SS

A4