

CONDUIT ENTRY HOLE		
Hole	Metric	NPT
A	M32	1 1/4"
B	M25	3/4"
C	M20	3/4"

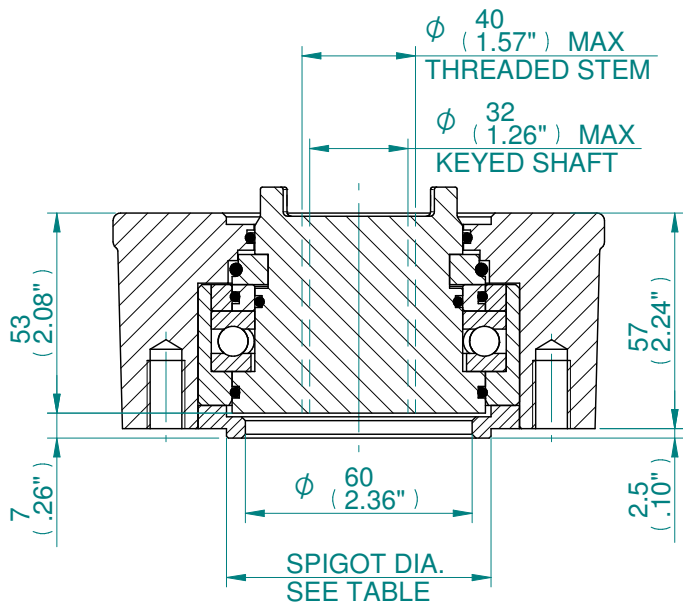
- NOTE:
- THRUST BASE. PLEASE REFER TO THE TECHNICAL DATA SECTION OF BROCHURE FOR DETAILS OF MAXIMUM AXIAL THRUST RATINGS.
  - BASEPLATE DETAILS: F10/FA10.
  - DIMENSIONS WITH '\*' INDICATE COVER REMOVAL ALLOWANCE
  - THE INTERFACE PROVIDED FOR MOUNTING THE ACTUATOR OR SECOND STAGE GEARBOX ONTO THE VALVE SHOULD CONFORM TO GOOD ENGINEERING PRACTICES, ENSURING ADEQUATELY TOLERANCED LIMITS FOR PARALLELISM, PERPENDICULARITY AND CONCENTRICITY.
  - ROTORC CANNOT BE HELD LIABLE FOR DAMAGE TO OUR EQUIPMENT CAUSED BY EXCESSIVE LOADING FROM COVER TUBES, HANDWHEEL AND HAND LEVER.

PARAMETER	VALUE	DESCRIPTION
DRAWING TYPE	A	INSTALLATION DRAWING
ACTUATOR	B	CK(R)A120
GEARBOX1	00	NO G.B.1.
GEARBOX2	N0	NO G.B.2
CENTRONIK / TERMINAL	B	3 COND
MECHANISM / MOTOR	A	AID/LARGE MOT.
HANDWHEEL / REAR / FRONT	0	STD.H.W./STD.REAR./STD.FRNT.
ORIENTATION	0	STD. ORIENT.

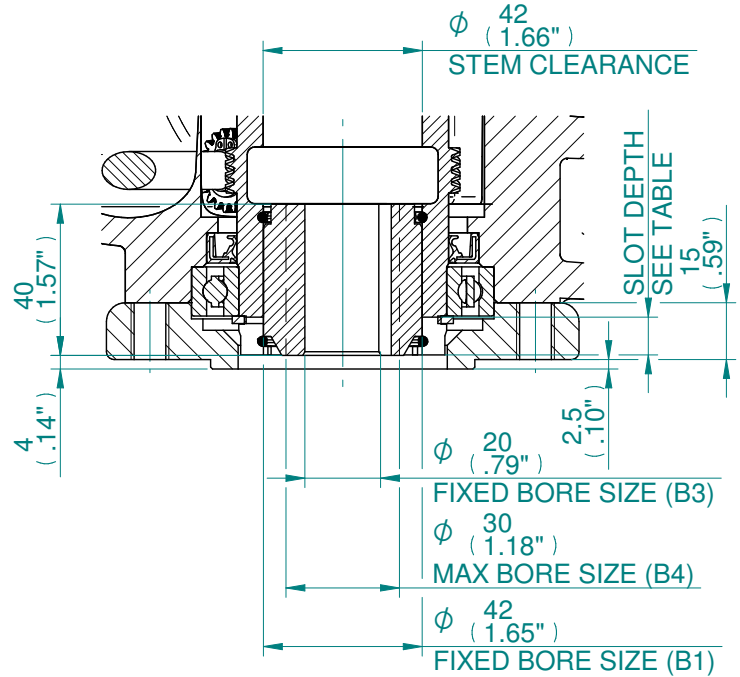
<b>CK range</b>	Drawn	TAMIL	15-10-18
	Checked	BHARAT	15-10-18
	Approved	JOSE	15-10-18

<b>Title</b>	DIMENSIONAL DRAWING, CKA120 & CKRA120, 3 CONDUIT ENTRIES, AID/LARGE MOTOR, STANDARD ORIENTATION
<small>This drawing and the information it contains are property of Rotork Controls Limited, and they will not be reproduced or disclosed, in whole or in part, without the prior written consent of Rotork.</small>	

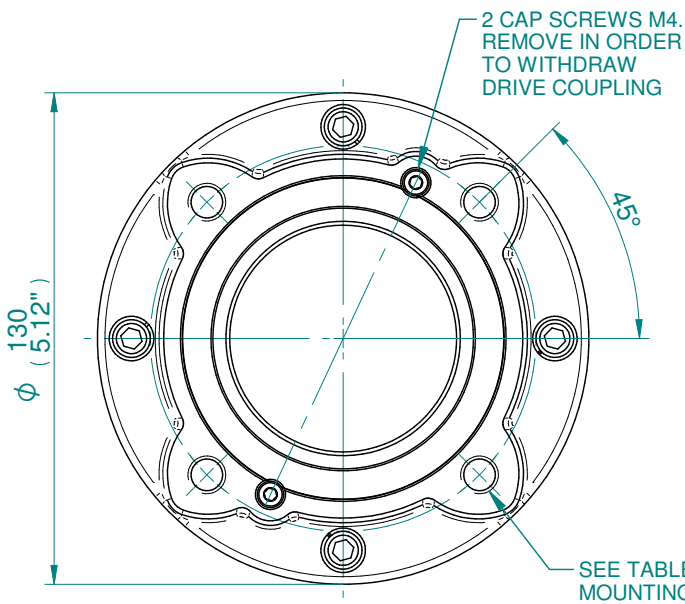
<b>A4</b>	<b>Doc Number</b>	<b>Ver No</b>	<b>Scale</b>	<b>Sheet No</b>
	<b>A800N0BA00X</b>	<b>1</b>	<b>NTS</b>	<b>1 of 2</b>



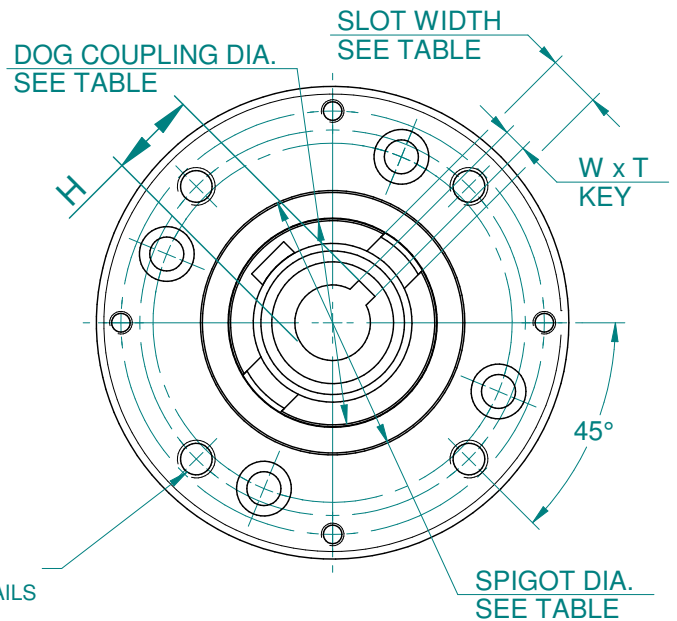
TYPE "A"  
COUPLING DETAILS



TYPE "B1, B3 & B4"  
COUPLING DETAILS



F10/FA10  
THRUST BASE



F10/FA10  
NON-THRUST BASE (B1, B3 & B4)

B1, B3 & B4 KEY DETAILS	
DESCRIPTION	F10/FA10
KEY (B1) WxT	12x8
KEY (B3) WxT	6x6
MAX. KEY (B4) WxT	8x7
H (B1)	45.3
H (B3)	22.8
H (B4) MAX	33.3

BASEPLATE MOUNTING DETAILS			
TYPE	BASEPLATE	SPIGOT DIA.	HOLE DETAILS (45° OFF CENTRES)
ISO F10	STANDARD	Ø69.970/69.924	4 HOLES M10x15 (0.59") DEEP ON Ø102.0 (Ø4.02") P.C.
		Ø2.310/2.305"	4 HOLES 3/8"UNCx15 (0.59") DEEP ON Ø101.6 (Ø4.00") P.C.

DOG COUPLING DETAILS	
SLOT WIDTH	14
SLOT DEPTH	10
DOG COUPLING DIA.	Ø54

**CK range**

Drawn	TAMIL	15-10-18
Checked	BHARAT	15-10-18
Approved	JOSE	15-10-18

**Title** DIMENSIONAL DRAWING, CKA120 & CKRA120, 3 CONDUIT ENTRIES, AID/LARGE MOTOR, STANDARD ORIENTATION

This drawing and the information it contains are property of Rotork Controls Limited, and they will not be reproduced or disclosed, in whole or in part, without the prior written consent of Rotork.

<b>A4</b>	Doc Number	Ver No	Scale	Sheet No
	<b>A800N0BA00X</b>	<b>1</b>	<b>NTS</b>	<b>2 of 2</b>