

- NOTE:
1. GEARBOX RATIOS: 140, 210 & 280:1.
 2. GEARBOX BASEPLATE: F16/FA16, F25/FA25 & F30/FA30.
 3. DIMENSIONS WITH "*" INDICATE COVER REMOVAL ALLOWANCE
 4. THE INTERFACE PROVIDED FOR MOUNTING THE ACTUATOR OR SECOND STAGE GEARBOX ONTO THE VALVE SHOULD CONFORM TO GOOD ENGINEERING PRACTICES, ENSURING ADEQUATELY TOLERANCED LIMITS FOR PARALLELISM, PERPENDICULARITY AND CONCENTRICITY.
 5. ROTORK CANNOT BE HELD LIABLE FOR DAMAGE TO OUR EQUIPMENT CAUSED BY EXCESSIVE LOADING FROM COVER TUBES, HANDWHEEL AND HAND LEVER.

PARAMETER	VALUE	DESCRIPTION
DRAWING TYPE	A	INSTALLATION DRAWING
ACTUATOR	7	CK(R)A30/60
GEARBOX1	W6	IW6
GEARBOX2	RL	LOW RATIO
TERMINAL COVER	B	3 COND
MECHANISM / MOTOR	0	STD. MECH./LARGE MOT.
HANDWHEEL / REAR / FRONT	0	STD.H.W./STD.REAR/STD.FRNT.
ORIENTATION	0	STD.ORIENT.

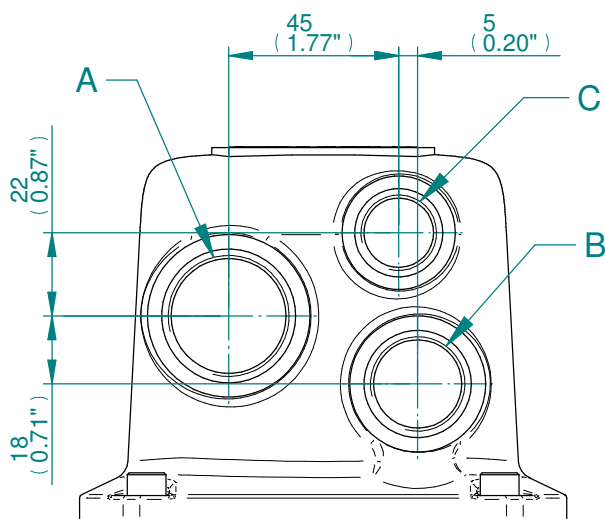
CK range	Drawn	HAABI	26-11-19
	Checked	TAMIL	26-11-19
	Approved	JOSE	26-11-19

Title DIMENSIONAL DRAWING, CKA30/60 & CKRA30/60, IW6, LOW RATIO, 3 CONDUIT ENTRIES, LARGE MOTOR, STANDARD ORIENTATION.

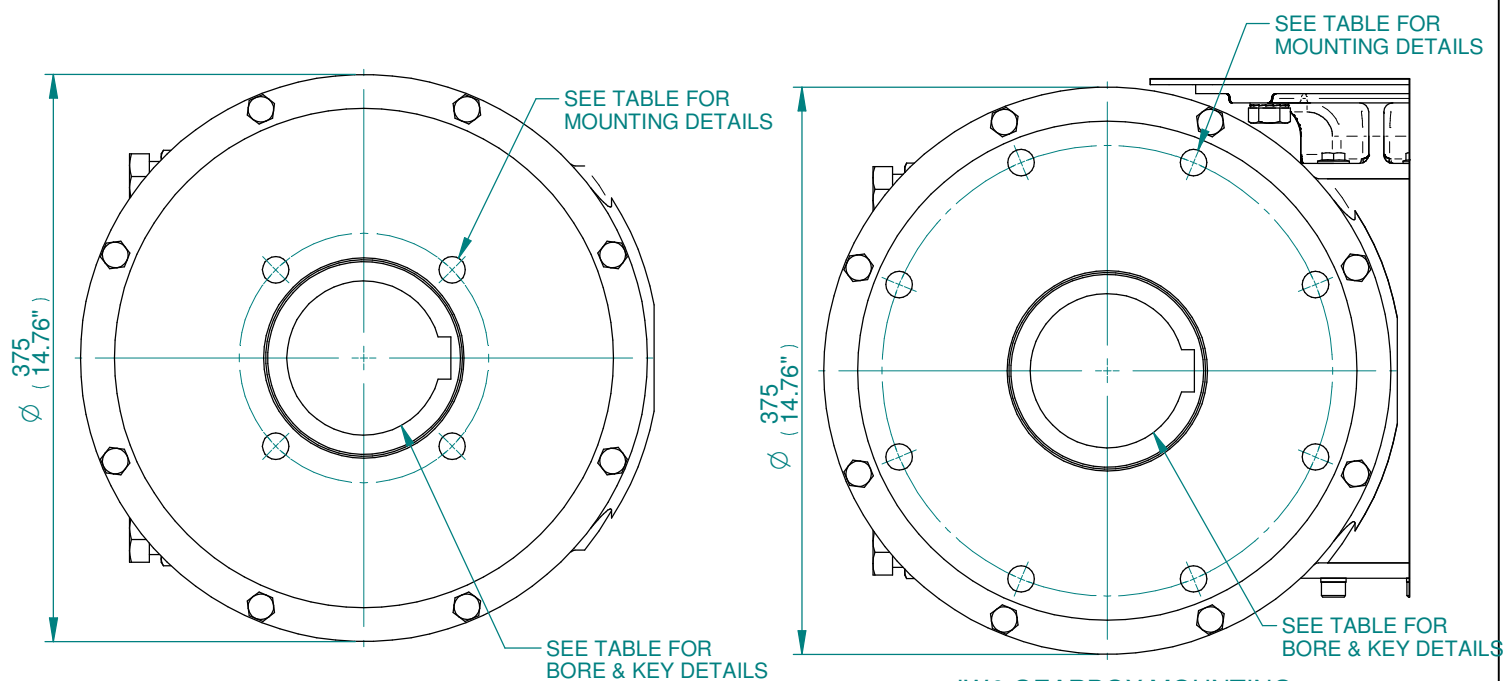
This drawing and the information it contains are property of Rotork Controls Limited, and they will not be reproduced or disclosed, in whole or in part, without the prior written consent of Rotork.

A4	Doc Number	Ver No	Scale	Sheet No
	A7W6RLB000X	1	NTS	1 of 2

CONDUIT ENTRY HOLE		
Hole	Metric	NPT
A	M32	1 1/4"
B	M25	3/4"
C	M20	3/4"



CONDUIT ENTRIES



IW6 GEARBOX MOUNTING
DETAILS FOR F16/FA16

IW6 GEARBOX MOUNTING
DETAILS FOR F25/FA25 & F30/FA30

BASEPLATE	X	Y	Z
STANDARD THICKNESS	70	113	139
FILLED THICKNESS	70	113	139
WAFER THICKNESS	93	136	162

STD	MAX BORE SQ KEY		MAX BORE RECTANGULAR KEY	
	BORE	KEY	BORE	KEY
BS4235	-	-	102	28X16
BS46	3.625"	1"SQ	3.75"	1"X3/4"
ANSI B17.1	3.75"	7/8"SQ	3.875"	1"X3/4"

BASEPLATE DETAILS		
TYPE	BASEPLATE	HOLE DETAILS (45° OFF CENTRES)
ISO F16	STANDARD	4 HOLES M20X20 (0.79") DEEP ON Ø165.0 (Ø6.50") P.C.
		4 HOLES 3/4"UNCX20 (0.79") DEEP ON Ø165.0 (Ø6.50") P.C.
FA16		
TYPE	BASEPLATE	HOLE DETAILS (22.5° OFF CENTRES)
ISO F25	STANDARD	8 HOLES M16X16 (0.63") DEEP ON Ø254.00 (Ø10.00") P.C.
		8 HOLES 5/8"UNCX16 (0.63") DEEP ON Ø254.00 (Ø10.00") P.C.
FA25		
ISO F30	FILLED & WAFER	8 HOLES M20X30 (1.18") DEEP ON Ø298.00 (Ø11.73") P.C.
		8 HOLES 3/4"UNCX30 (1.18") DEEP ON Ø298.00 (Ø11.73") P.C.
FA30		

CK range
 Drawn: HAABI 26-11-19
 Checked: TAMIL 26-11-19
 Approved: JOSE 26-11-19

Title DIMENSIONAL DRAWING, CKA30/60 & CKRA30/60, IW6, LOW RATIO, 3 CONDUIT ENTRIES, LARGE MOTOR, STANDARD ORIENTATION.

This drawing and the information it contains are property of Rotork Controls Limited, and they will not be reproduced or disclosed, in whole or in part, without the prior written consent of Rotork.

A4 Doc Number Ver No Scale Sheet No
A7W6RLB000X 1 NTS 2 of 2