

- NOTE:**
1. GEARBOX RATIOS: 180,240,360,480,540 & 720:1.
 2. GEARBOX BASEPLATE: F40/FA40 & F48/FA48.
 3. DIMENSIONS WITH "*" INDICATE COVER REMOVAL ALLOWANCE
 4. THE INTERFACE PROVIDED FOR MOUNTING THE ACTUATOR OR SECOND STAGE GEARBOX ONTO THE VALVE SHOULD CONFORM TO GOOD ENGINEERING PRACTICES, ENSURING ADEQUATELY TOLERANCED LIMITS FOR PARALLELISM, PERPENDICULARITY AND CONCENTRICITY.
 5. ROTORK CANNOT BE HELD LIABLE FOR DAMAGE TO OUR EQUIPMENT CAUSED BY EXCESSIVE LOADING FROM COVER TUBES, HANDWHEEL AND HAND LEVER.

PARAMETER	VALUE	DESCRIPTION
DRAWING TYPE	A	INSTALLATION DRAWING
ACTUATOR	6	CK(R)C250/500
GEARBOX1	WB	IW11
GEARBOX2	RH	HIGH RATIO
TERMINAL COVER	B	3 COND
MECHANISM / MOTOR	0	STD. MECH/LARGE MOT.
HANDWHEEL / REAR / FRONT	0	STD.H.W./STD.REAR/STD.FRNT.
ORIENTATION	0	STD.ORIENT.

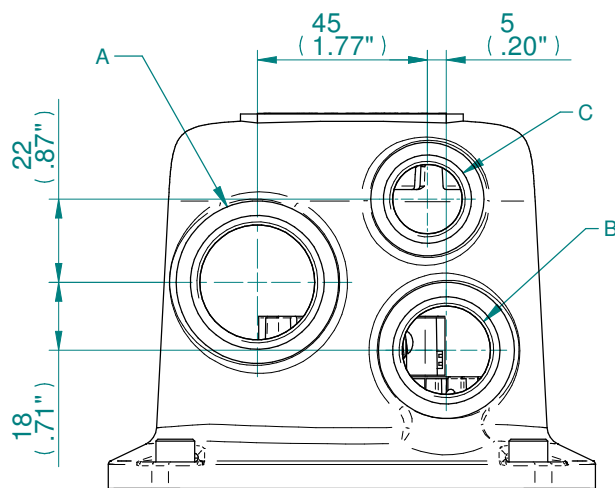
CK range	Drawn	HAABI	03-04-20
	Checked	TAMIL	03-04-20
	Approved	JOSE	03-04-20

Title DIMENSIONAL DRAWING, CKC250/500 & CKRC250/500, IW11, HIGH RATIO, 3 CONDUIT ENTRIES, LARGE MOTOR, STANDARD ORIENTATION.

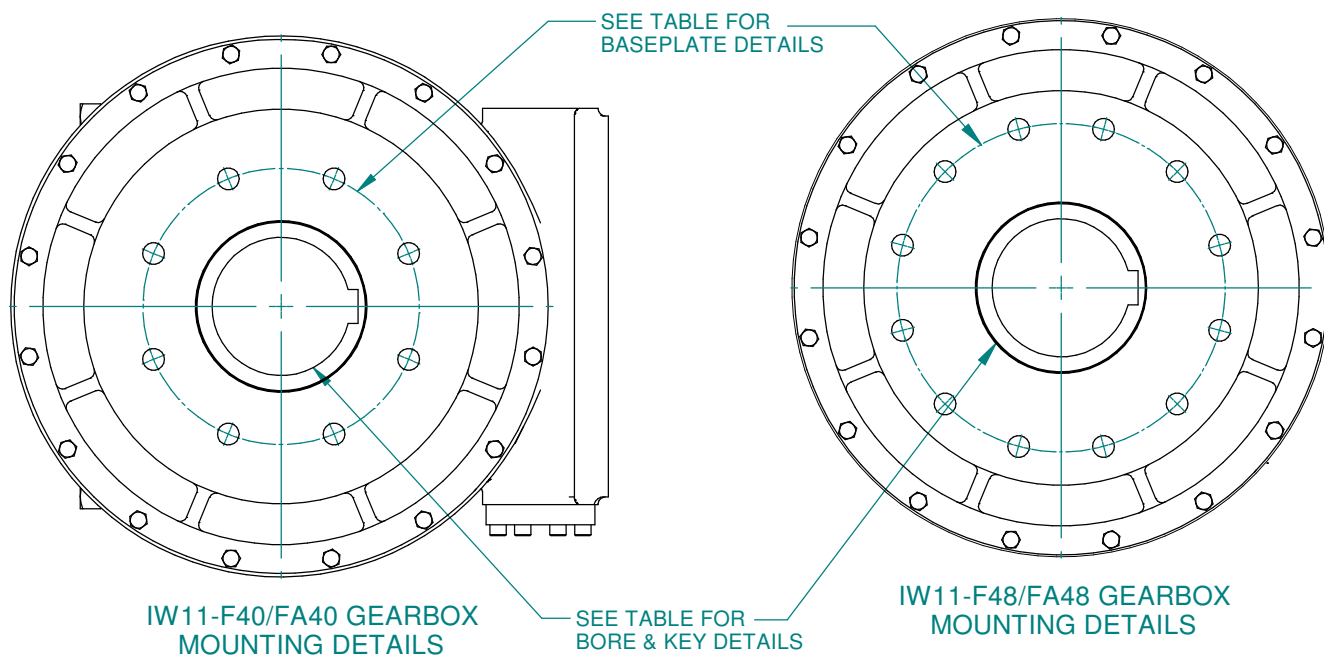
This drawing and the information it contains are property of Rotork Controls Limited, and they will not be reproduced or disclosed, in whole or in part, without the prior written consent of Rotork.

A4	Doc Number	Ver No	Scale	Sheet No
	A6WBRHB000X	1	NTS	1 of 2

CONDUIT ENTRY HOLE		
Hole	Metric	NPT
A	M32	1 1/4"
B	M25	3/4"
C	M20	3/4"



CONDUIT ENTRIES



IW11-F40/FA40 GEARBOX MOUNTING DETAILS

IW11-F48/FA48 GEARBOX MOUNTING DETAILS

BASEPLATE	X	Y	Z
STANDARD THICKNESS	120	200	247
FILLED THICKNESS	120	200	247

STD	MAX BORE SQ KEY		MAX BORE RECTANGULAR KEY	
	BORE	KEY	BORE	KEY
BS4235	-	-	270	63X32
BS46	-	-	10"	2.1/2" x 1.7/8"
ANSI B17.1	9.4"	2.1/2" SQ.	10.125"	2.1/2" x 1.3/4"

BASEPLATE DETAILS		
TYPE	BASEPLATE	HOLE DETAILS (22.5° OFF CENTRES)
ISO F40	STANDARD	8 HOLES M36X36 (1.42") DEEP ON Ø406.0 (Ø15.98") P.C.
FA40		8 HOLES 1.25"UNCX36 (1.42") DEEP ON Ø406.4 (Ø16.00") P.C.
ISO F48		12 HOLES M36X36 (1.42") DEEP ON Ø483.00 (Ø19.02") P.C.
FA48		12 HOLES 1.25"UNCX36 (1.42") DEEP ON Ø482.6 (Ø19.00") P.C.



Drawn	HAABI	03-04-20
Checked	TAMIL	03-04-20
Approved	JOSE	03-04-20

Title DIMENSIONAL DRAWING, CKC250/500 & CKRC250/500, IW11, HIGH RATIO, 3 CONDUIT ENTRIES, LARGE MOTOR, STANDARD ORIENTATION.

This drawing and the information it contains are property of Rotork Controls Limited, and they will not be reproduced or disclosed, in whole or in part, without the prior written consent of Rotork.

A4	Doc Number	Ver No	Scale	Sheet No
	A6WBRHB000X	1	NTS	2 of 2