

- NOTE:
1. GEARBOX RATIOS: 8, 12, 16, 18, 24 & 36:1.
  2. GEARBOX BASEPLATE: F25/FA25 & F30/FA30.
  3. DIMENSIONS WITH "\*" INDICATE COVER REMOVAL ALLOWANCE
  4. THE INTERFACE PROVIDED FOR MOUNTING THE ACTUATOR OR SECOND STAGE GEARBOX ONTO THE VALVE SHOULD CONFORM TO GOOD ENGINEERING PRACTICES, ENSURING ADEQUATELY TOLERANCED LIMITS FOR PARALLELISM, PERPENDICULARITY AND CONCENTRICITY.
  5. ROTORK CANNOT BE HELD LIABLE FOR DAMAGE TO OUR EQUIPMENT CAUSED BY EXCESSIVE LOADING FROM COVER TUBES, HANDWHEEL AND HAND LEVER.

PARAMETER	VALUE	DESCRIPTION
DRAWING TYPE	A	INSTALLATION DRAWING
ACTUATOR	6	CK(R)C250/500
GEARBOX1	BA	IB10
GEARBOX2	A5	AS5
TERMINAL COVER	B	CTK/3 COND
MECHANISM / MOTOR	S	STD. MECH/SMALL MOT.
HANDWHEEL / REAR / FRONT	0	STD.H.W./STD.REAR/STD.FRNT.
ORIENTATION	0	STD.ORIENT.

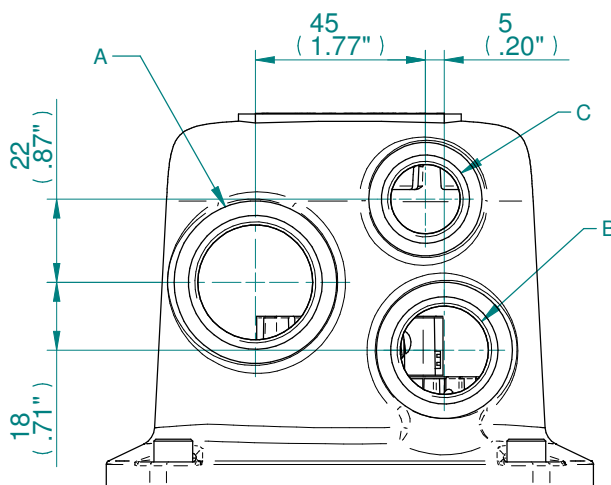
<b>CK range</b>	Drawn	TAMIL	30-05-2018
	Checked	BHARAT	30-05-2018
	Approved	JOSE	30-05-2018

**Title** DIMENSIONAL DRAWING, CKC250/500 & CKRC250/500, IB10, AS5, CENTRONIK / 3 CONDUIT ENTRIES, SMALL MOTOR, STANDARD ORIENTATION.

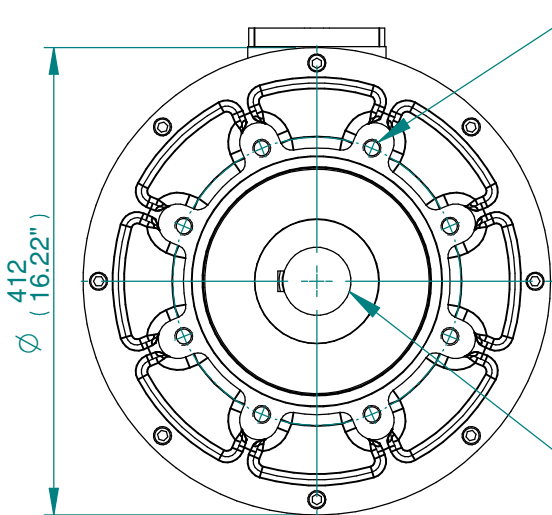
This drawing and the information it contains are property of Rotork Controls Limited, and they will not be reproduced or disclosed, in whole or in part, without the prior written consent of Rotork.

<b>A4</b>	<b>Doc Number</b>	<b>Ver No</b>	<b>Scale</b>	<b>Sheet No</b>
	<b>A6BAA5BS00X</b>	<b>1</b>	<b>NTS</b>	<b>1 of 2</b>

CONDUIT ENTRY HOLE		
Hole	Metric	NPT
A	M32	1 1/4"
B	M25	3/4"
C	M20	3/4"



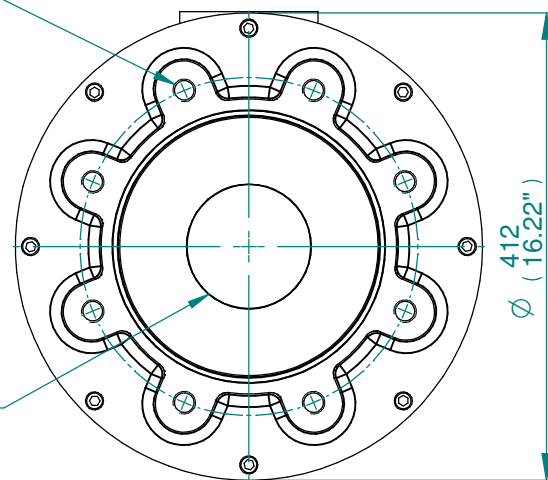
**CONDUIT ENTRIES**



**IB10-F25/FA25 GEARBOX MOUNTING DETAILS**

SEE TABLE FOR BASEPLATE DETAILS

SEE TABLE FOR BORE & KEY DETAILS



**IB10-F30/FA30 GEARBOX MOUNTING DETAILS**

<b>MAX. STEM SCREW ACCEPTANCE DIA</b>
86(3.375")

STD	MAX BORE SQ KEY		MAX BORE RECTANGULAR KEY	
	BORE	KEY	BORE	KEY
BS4235	-	-	76.0	22x14
BS46	2.750"	3/4" SQ	3.000"	3/4"x1/2"
ANSI B17.1	2.750"	5/8" SQ	3.000"	3/4"x1/2"

BASEPLATE DETAILS			
TYPE	BASEPLATE	SPIGOT DIA.	HOLE DETAILS (22.5° OFF CENTRES)
ISO F25	STANDARD	Ø199.95-0.05 (Ø7.872"-0.002")	8 HOLES M16x20 (0.79") DEEP ON Ø254.0 (Ø10.00") P.C.
FA25		Ø152.25-0.05 (Ø5.994"-0.002")	8 HOLES 5/8"UNCx20 (0.79") DEEP ON Ø254.4 (Ø10.00") P.C.
ISO F30	STANDARD	Ø229.95-0.05 (Ø9.053"-0.002")	8 HOLES M20x25 (0.98") DEEP ON Ø298.0 (Ø11.73") P.C.
FA30		Ø177.70-0.05 (Ø6.996"-0.002")	8 HOLES 3/4"UNCx25 (0.98") DEEP ON Ø298.5 (Ø11.75") P.C.

<b>CK range</b>	Drawn	TAMIL	30-05-2018
	Checked	BHARAT	30-05-2018
	Approved	JOSE	30-05-2018

**Title** DIMENSIONAL DRAWING, CKC250/500 & CKRC250/500, IB10, AS5, CENTRONIK / 3 CONDUIT ENTRIES, SMALL MOTOR, STANDARD ORIENTATION.

This drawing and the information it contains are property of Rotork Controls Limited, and they will not be reproduced or disclosed, in whole or in part, without the prior written consent of Rotork.

<b>A4</b>	<b>Doc Number</b>	<b>Ver No</b>	<b>Scale</b>	<b>Sheet No</b>
	<b>A6BAA5BS00X</b>	<b>1</b>	<b>NTS</b>	<b>2 of 2</b>