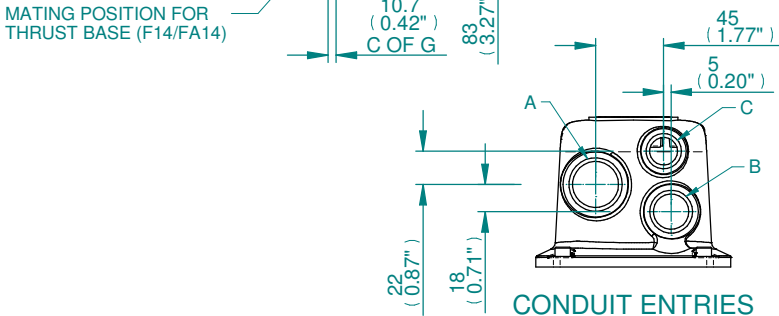


MATING POSITION FOR THRUST BASE (F14/FA14)



CONDUIT ENTRIES

CONDUIT ENTRY HOLE		
Hole	Metric	NPT
A	M32	1 1/4"
B	M25	3/4"
C	M20	3/4"

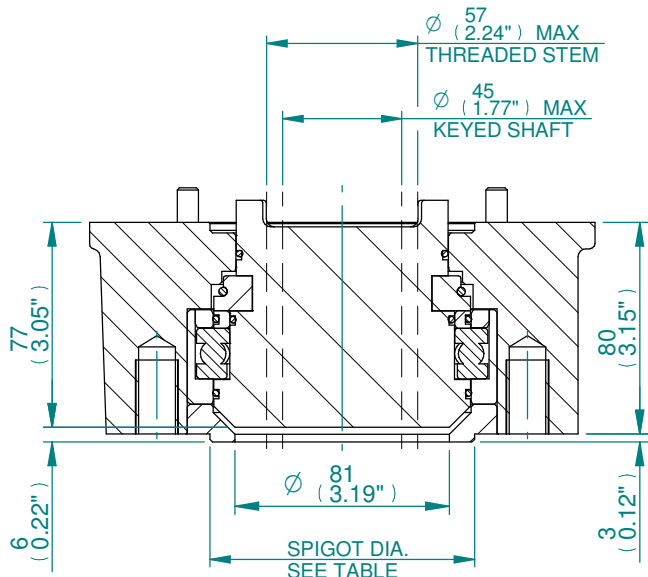
- NOTE:
- THRUST BASE. PLEASE REFER TO THE TECHNICAL DATA SECTION OF BROCHURE FOR DETAILS OF MAXIMUM AXIAL THRUST RATINGS.
  - BASEPLATE DETAILS: F14/FA14.
  - DIMENSIONS WITH '\*' INDICATE COVER REMOVAL ALLOWANCE
  - THE INTERFACE PROVIDED FOR MOUNTING THE ACTUATOR OR SECOND STAGE GEARBOX ONTO THE VALVE SHOULD CONFORM TO GOOD ENGINEERING PRACTICES, ENSURING ADEQUATELY TOLERANCED LIMITS FOR PARALLELISM, PERPENDICULARITY AND CONCENTRICITY.
  - ROTORC KANOT BE HELD LIABLE FOR DAMAGE TO OUR EQUIPMENT CAUSED BY EXCESSIVE LOADING FROM COVER TUBES, HANDWHEEL AND HAND LEVER.

PARAMETER	VALUE	DESCRIPTION
DRAWING TYPE	A	INSTALLATION DRAWING
ACTUATOR	6	CK(R)C250/500
GEARBOX1	00	NO G.B.1.
GEARBOX2	NO	NO G.B.2
CENTRONIK / TERMINAL	B	CTK/3 COND
MECHANISM / MOTOR	S	STD. MECH./SMALL MOT.
HANDWHEEL / REAR / FRONT	0	STD.H.W./STD.REAR./STD.FRNT.
ORIENTATION	0	STD. ORIENT.

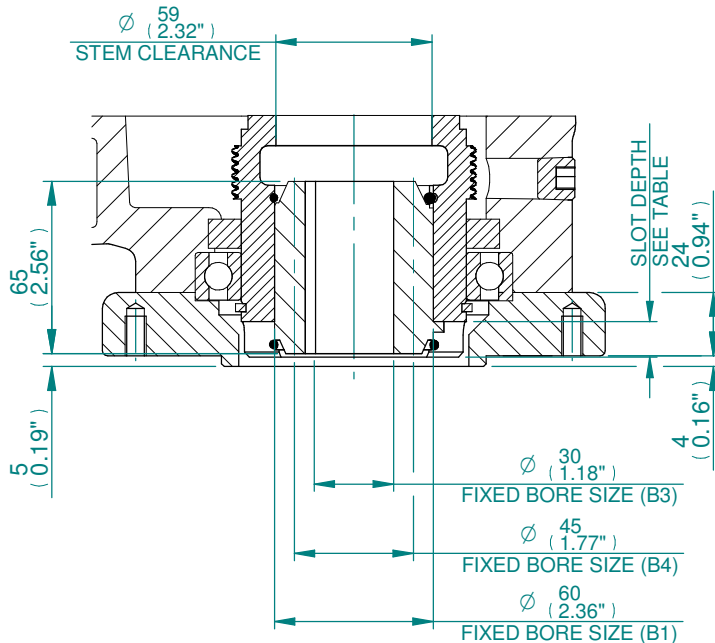
<b>CK range</b>	Drawn	TAMIL	10-10-17
	Checked	BHARAT	10-10-17
	Approved	JOSE	10-10-17

**Title** DIMENSIONAL DRAWING, CKC250/500 & CKCR250/500, CENTRONIK/3 CONDUIT ENTRIES, SMALL MOTOR, STANDARD ORIENTATION.

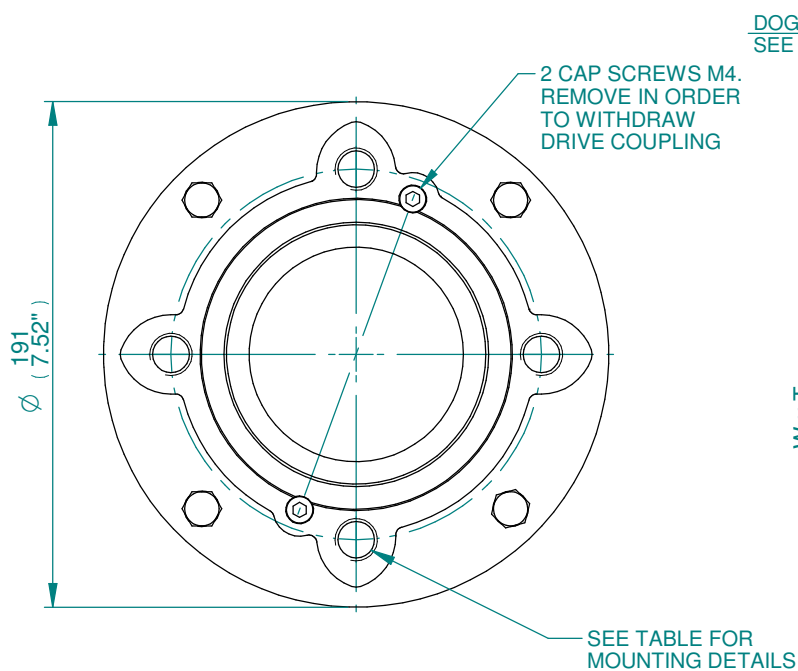
<b>A4</b>	<b>Doc Number</b>	<b>Ver No</b>	<b>Scale</b>	<b>Sheet No</b>
	<b>A600N0BS00X</b>	<b>3</b>	<b>NTS</b>	<b>1 of 2</b>



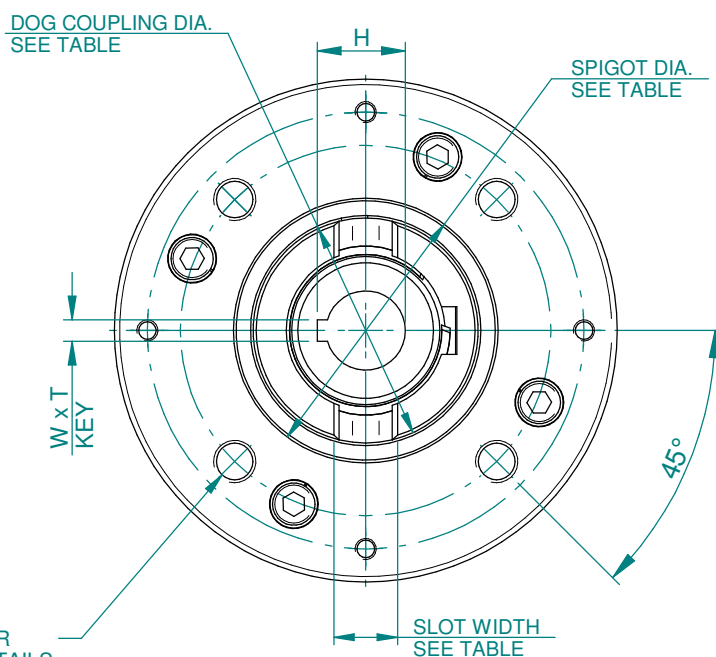
**TYPE "A"  
COUPLING DETAILS**



**TYPE 'B1/B3/B4'  
COUPLING DETAILS**



**F14/FA14  
THRUST BASE**



**F14/FA14  
NON THRUST BASE (B1, B3 & B4)**

DOG COUPLING DETAILS	
SLOT WIDTH	20
SLOT DEPTH	13.4
DOG COUPLING	Ø85

B1, B3 & B4 KEY DETAILS	
DESCRIPTION	F14/FA14
KEY (B1) WxT	18x11
KEY (B3) WxT	8x7
MAX. KEY (B4) WxT	14x9
H (B1)	64.4
H (B3)	33.3
H (B4) MAX	48.8

BASEPLATE DETAILS			
TYPE	BASEPLATE	SPIGOT DIA.	HOLE DETAILS (45° OFF CENTRES)
ISO F14	STANDARD	Ø99.964/99.910	4 HOLES M16X16 (0.63") DEEP ON Ø140.0 (Ø5.51") P.C.
		Ø3.749"/3.742"	4 HOLES 5/8"UNCx16 (0.63") DEEP ON Ø139.7 (Ø5.50") P.C.



Drawn	TAMIL	10-10-17
Checked	BHARAT	10-10-17
Approved	JOSE	10-10-17

**Title** DIMENSIONAL DRAWING, CKC250/500 & CKCR250/500, CENTRONIK/3 CONDUIT ENTRIES, SMALL MOTOR, STANDARD ORIENTATION.

<b>A4</b>	Doc Number	Ver No	Scale	Sheet No
	<b>A600N0BS00X</b>	<b>3</b>	<b>NTS</b>	<b>2 of 2</b>