

- NOTE:
1. GEARBOX RATIOS: 2, 3, 4 & 6:1.
 2. GEARBOX BASEPLATE: F14 & FA14 AND F16 & FA16.
 3. DIMENSIONS WITH "*" INDICATE COVER REMOVAL ALLOWANCE
 4. THE INTERFACE PROVIDED FOR MOUNTING THE ACTUATOR OR SECOND STAGE GEARBOX ONTO THE VALVE SHOULD CONFORM TO GOOD ENGINEERING PRACTICES, ENSURING ADEQUATELY TOLERANCED LIMITS FOR PARALLELISM, PERPENDICULARITY AND CONCENTRICITY.
 5. ROTORK CANNOT BE HELD LIABLE FOR DAMAGE TO OUR EQUIPMENT CAUSED BY EXCESSIVE LOADING FROM COVER TUBES, HANDWHEEL AND HAND LEVER.

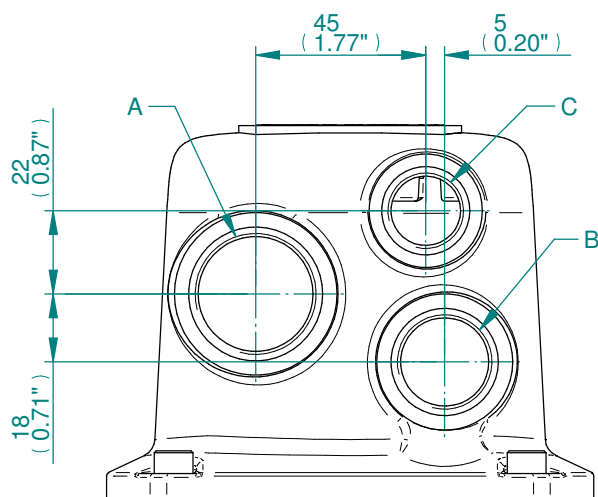
PARAMETER	VALUE	DESCRIPTION
DRAWING TYPE	A	INSTALLATION DRAWING
ACTUATOR	5	CK(R)C120
GEARBOX1	B5	IB5
GEARBOX2	NO	NO G.B.2
TERMINAL COVER	B	3 COND
MECHANISM / MOTOR	A	AID/LARGE MOT.
HANDWHEEL / REAR / FRONT	0	STD.H.W./STD.REAR/STD.FRNT.
ORIENTATION	0	STD.ORIENT.

CK range	Drawn	HAABI	19-11-19
	Checked	TAMIL	19-11-19
	Approved	JOSE	19-11-19

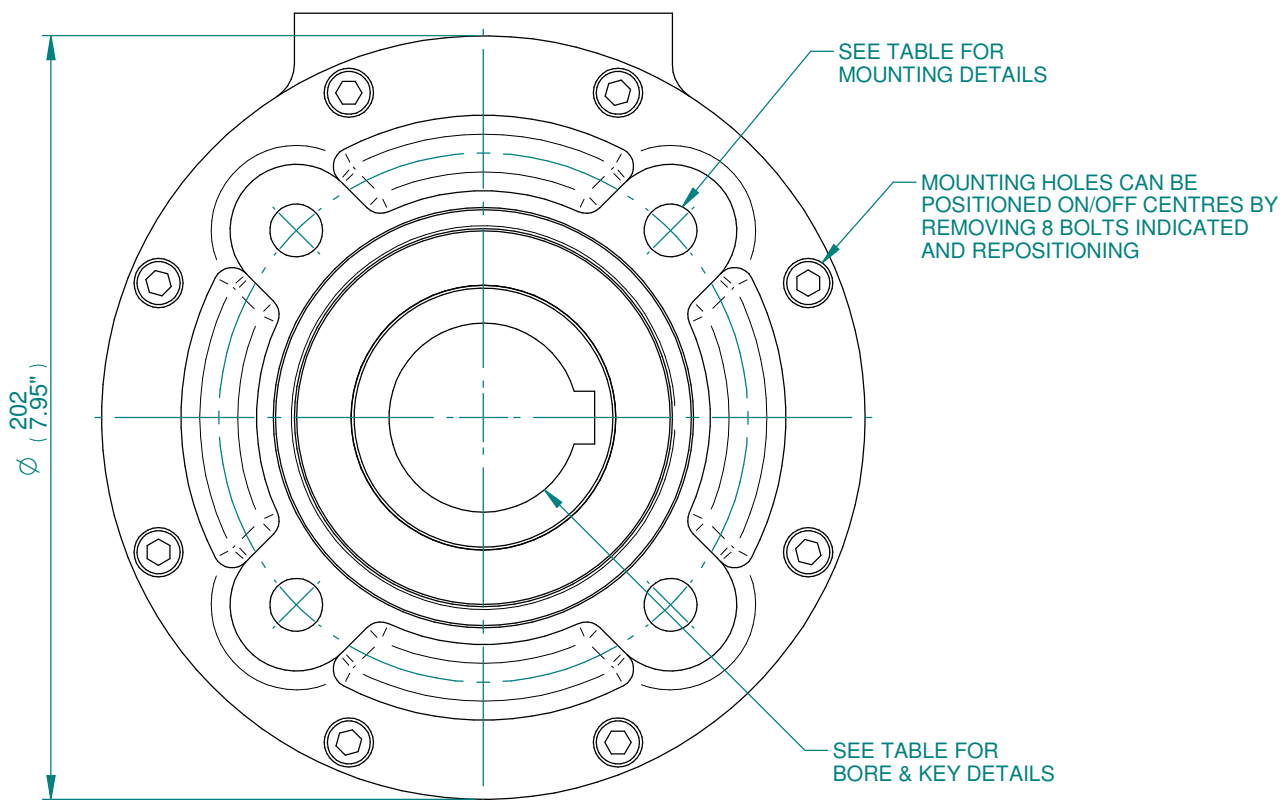
Title	DIMENSIONAL DRAWING, CKC120 & CKRC120, IB5, 3 CONDUIT ENTRIES, AID/LARGE MOTOR, STANDARD ORIENTATION.
<small>This drawing and the information it contains are property of Rotork Controls Limited, and they will not be reproduced or disclosed, in whole or in part, without the prior written consent of Rotork.</small>	

A4	Doc Number	Ver No	Scale	Sheet No
	A5B5N0BA00X	1	NTS	1 of 2

CONDUIT ENTRY HOLE		
Hole	Metric	NPT
A	M32	1 1/4"
B	M25	3/4"
C	M20	3/4"



CONDUIT ENTRIES



IB5 GEARBOX MOUNTING DETAILS

MAX. STEM SCREW ACCEPTANCE DIA
55 (2.125")

STD	MAX BORE SQ KEY		MAX BORE RECTANGULAR KEY	
	BORE	KEY	BORE	KEY
BS4235	-	-	52.0	16X10
BS46	1.875"	1/2" SQ	2.000"	1/2"x5/16"
ANSI B17.1	1.875"	1/2" SQ	2.000"	1/2"x3/8"

BASEPLATE DETAILS			
TYPE	BASEPLATE	SPIGOT DETAILS	HOLE DETAILS (45° OFF CENTRES)
ISO F14	STANDARD	Ø99.95-0.05	4 HOLES M16x20 (0.79") DEEP
		(Ø3.935"-0.002")	ON Ø140.0 (Ø5.51") P.C.
FA14		Ø95.22-0.10	4 HOLES 5/8"UNCx20 (0.79") DEEP
		(Ø3.749"-0.004")	ON Ø139.7 (Ø5.50") P.C.
ISO F16	Ø129.95-0.05	4 HOLES M20x25 (0.98") DEEP	
	(Ø5.116"-0.002")	ON Ø165.0 (Ø6.50") P.C.	
FA16	Ø126.87-0.25	4 HOLES 3/4" UNCx25 (0.98") DEEP	
	(Ø4.995"-0.010")	ON Ø165.0 (Ø6.50") P.C.	

CK range

Drawn	HAABI	19-11-19
Checked	TAMIL	19-11-19
Approved	JOSE	19-11-19

Title DIMENSIONAL DRAWING, CKC120 & CKRC120, IB5, 3 CONDUIT ENTRIES, AID/LARGE MOTOR, STANDARD ORIENTATION.

This drawing and the information it contains are property of Rotork Controls Limited, and they will not be reproduced or disclosed, in whole or in part, without the prior written consent of Rotork.

A4	Doc Number	Ver No	Scale	Sheet No
	A5B5N0BA00X	1	NTS	2 of 2