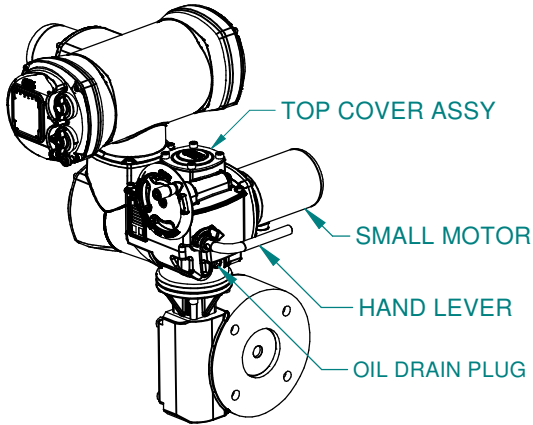


CENTRONIK

EARTHING POINT
M6x1p x 10 DEEP

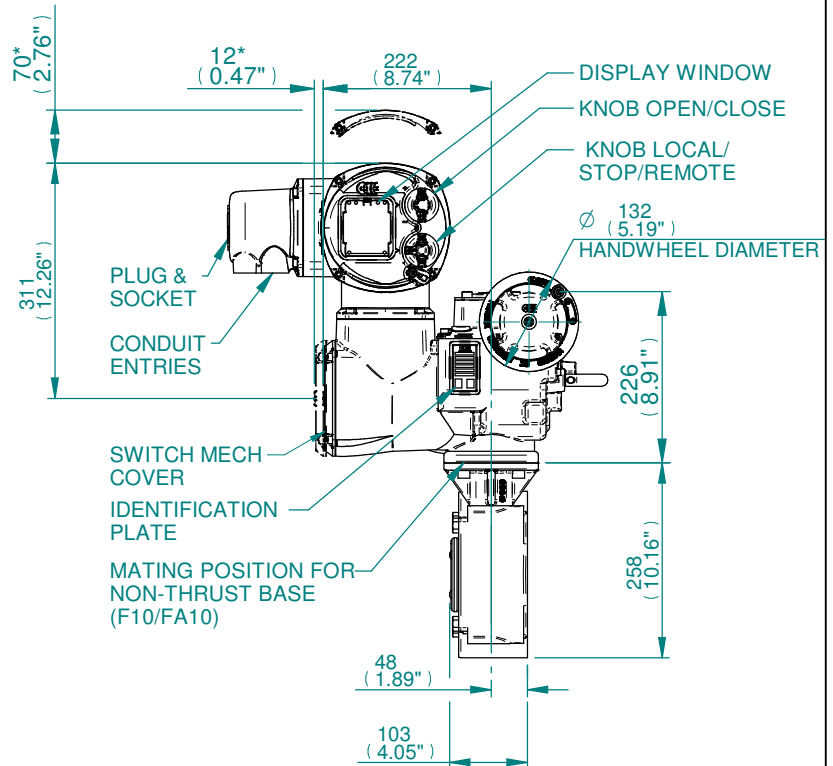
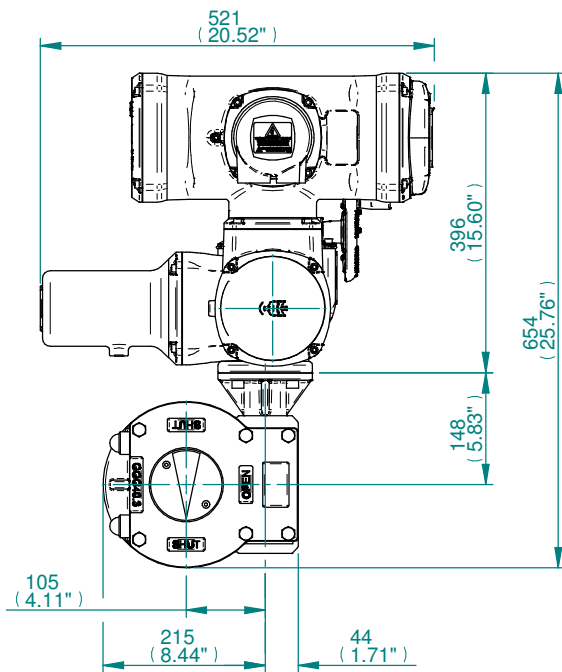
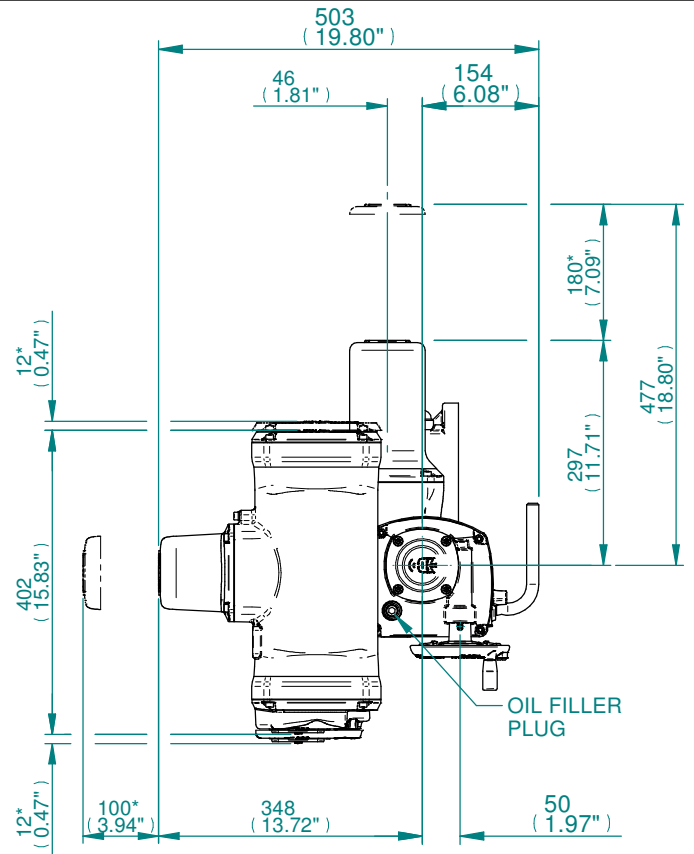


TOP COVER ASSY

SMALL MOTOR

HAND LEVER

OIL DRAIN PLUG



DISPLAY WINDOW

KNOB OPEN/CLOSE

KNOB LOCAL/
STOP/REMOTE

Ø 132 (5.19)
HANDWHEEL DIAMETER

PLUG &
SOCKET

CONDUIT
ENTRIES

SWITCH MECH
COVER

IDENTIFICATION
PLATE

MATING POSITION FOR
NON-THRUST BASE
(F10/FA10)

- NOTE:
1. GEARBOX RATIOS : 48:1
 2. GEARBOX BASEPLATE: F10/FA10 , F14/FA14 & F16/FA16.
 3. DIMENSIONS WITH "*" INDICATE COVER REMOVAL ALLOWANCE
 4. THE INTERFACE PROVIDED FOR MOUNTING THE ACTUATOR OR SECOND STAGE GEARBOX ONTO THE VALVE SHOULD CONFORM TO GOOD ENGINEERING PRACTICES, ENSURING ADEQUATELY TOLERANCED LIMITS FOR PARALLELISM, PERPENDICULARITY AND CONCENTRICITY.
 5. ROTORK CANNOT BE HELD LIABLE FOR DAMAGE TO OUR EQUIPMENT CAUSED BY EXCESSIVE LOADING FROM COVER TUBES, HANDWHEEL AND HAND LEVER.

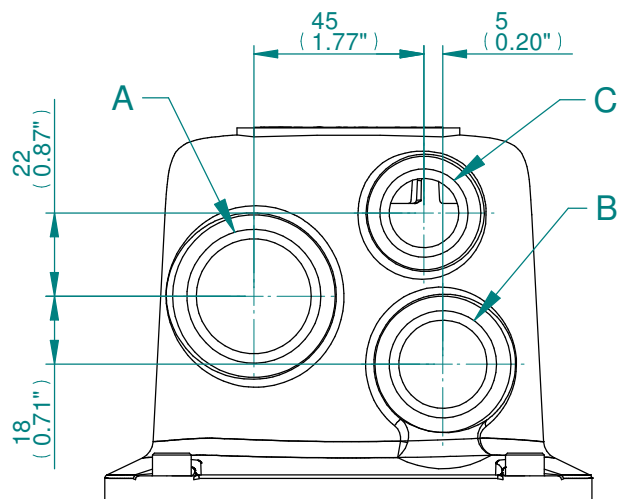
PARAMETER	VALUE	DESCRIPTION
DRAWING TYPE	A	INSTALLATION DRAWING
ACTUATOR	5	CK(R)C120
GEARBOX1	AC	AB1250M
GEARBOX2	NO	NO G.B.2
CENTRONIK / TERMINAL	B	CTK/3 COND
MECHANISM / MOTOR	S	STD MECH/SMALL MOT.
HANDWHEEL / REAR / FRONT	0	STD.H.W./STD.REAR/STD.FRNT.
ORIENTATION	0	STD.ORIENT.

CK range	Drawn	HAABI	06-04-20
	Checked	TAMIL	06-04-20
	Approved	JOSE	06-04-20

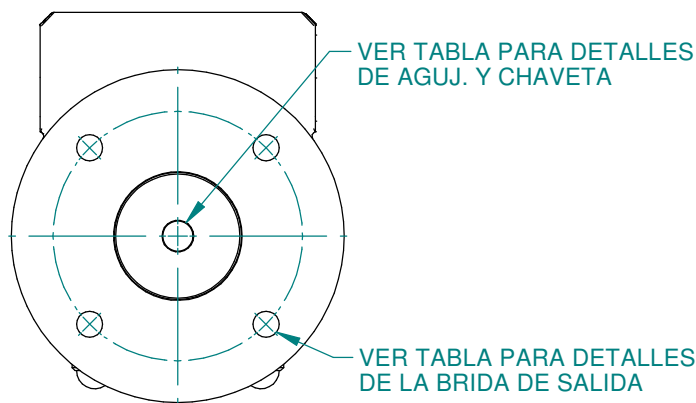
Title	DIMENSIONAL DRAWING, CKC120 & CKRC120, AB1250M, 3 CONDUIT ENTRIES, SMALL MOTOR, STANDARD ORIENTATION
--------------	--

A4	Doc Number	Ver No	Scale	Sheet No
	A5ACN0BS00X	1	NTS	1 of 2

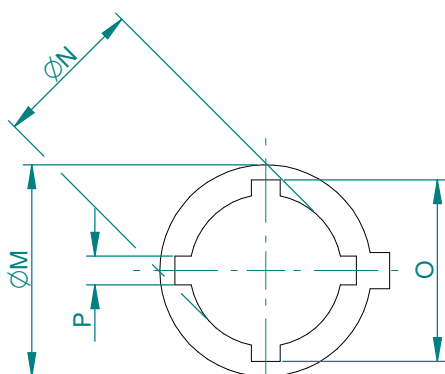
CONDUIT ENTRY HOLE		
Hole	Metric	NPT
A	M32	1 1/4"
B	M25	3/4"
C	M20	3/4"



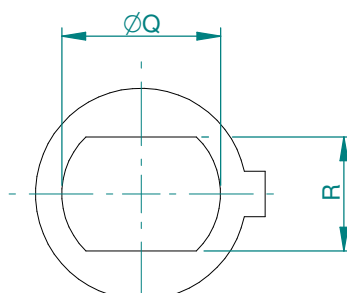
CONDUIT ENTRIES



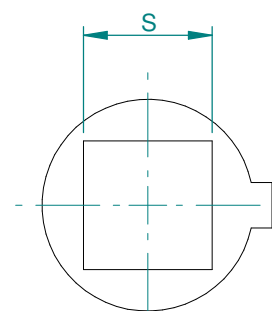
DETALLES DE LA BRIDA DE SALIDA
STANDARD DEL REDUCTOR AB1250



SALIDA ENCHAVETADA



SALIDA E/C



SALIDA CUADRADO

DIMENSIONS MAXIMUM (INSERTS)							
TYPE	ØM	ØN	O	P	ØQ	R	S
AB550M	60 (2.36)	44 (1.73)	50.6 (1.99)	12 (0.47)	48.2 (1.90)	36 (1.42)	36 (1.42)

BASEPLATE DETAILS		
TYPE	BASEPLATE	HOLE DETAILS (45° OFF CENTRES)
F10	STANDARD	4x M10 x 13 DEEP ON A Ø102P.C.
FA10		4x 3/8"UNC x 0.51" DEEP ON A Ø4"P.C.
F12		4x M12 x 16 DEEP ON A Ø125P.C.
FA12		4x 1/2"UNC x 0.63" DEEP ON A 4.95"P.C.
F14		4x M16 x 18 DEEP ON A Ø140P.C.
FA14		4x 5/8"UNC x 0.71" DEEP ON A Ø5.5"P.C.
F16		4x M20 x 18 DEEP ON A Ø165P.C.
FA16		4x 3/4"UNC x 0.71" DEEP ON A 6.5"P.C.

CK range	Drawn	HAABI	06-04-20
	Checked	TAMIL	06-04-20
	Approved	JOSE	06-04-20

Title	DIMENSIONAL DRAWING, CKC120 & CKRC120, AB1250M, 3 CONDUIT ENTRIES, SMALL MOTOR, STANDARD ORIENTATION
This drawing and the information it contains are property of Rotork Controls Limited, and they will not be reproduced or disclosed, in whole or in part, without the prior written consent of Rotork.	

A4	Doc Number	Ver No	Scale	Sheet No
	A5ACN0BS00X	1	NTS	2 of 2