

- NOTE:
1. GEARBOX RATIOS : 350, 420:1
 2. GEARBOX BASEPLATE: F16/FA16, F25/FA25 & F30/FA30
 3. DIMENSIONS WITH "*" INDICATE COVER REMOVAL ALLOWANCE
 4. THE INTERFACE PROVIDED FOR MOUNTING THE ACTUATOR OR SECOND STAGE GEARBOX ONTO THE VALVE SHOULD CONFORM TO GOOD ENGINEERING PRACTICES, ENSURING ADEQUATELY TOLERANCED LIMITS FOR PARALLELISM, PERPENDICULARITY AND CONCENTRICITY.
 5. ROTORK CANNOT BE HELD LIABLE FOR DAMAGE TO OUR EQUIPMENT CAUSED BY EXCESSIVE LOADING FROM COVER TUBES, HANDWHEEL AND HAND LEVER.

| PARAMETER | VALUE | DESCRIPTION |
|--------------------------|-------|-----------------------------|
| DRAWING TYPE | A | INSTALLATION DRAWING |
| ACTUATOR | 4 | CK(R)C30/C60 |
| GEARBOX1 | W6 | IW6 |
| GEARBOX2 | RH | HIGH RATIO |
| CENTRONIK / TERMINAL | B | CTK/3 COND |
| MECHANISM / MOTOR | 0 | STD.MECH./LARGE MOT. |
| HANDWHEEL / REAR / FRONT | 0 | STD.H.W./STD.REAR/STD.FRNT. |
| ORIENTATION | 0 | STD.ORIENT. |

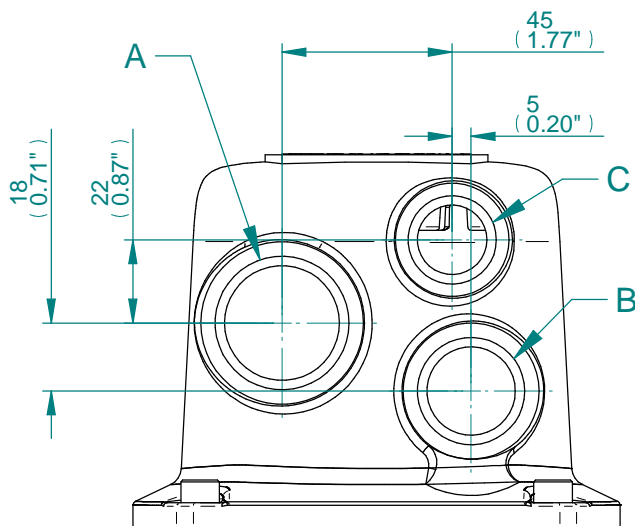
| | | | |
|-----------------|----------|--------|----------|
| CK range | Drawn | TAMIL | 10-05-17 |
| | Checked | BHARAT | 10-05-17 |
| | Approved | JOSE | 10-05-17 |

Title DIMENSIONAL DRAWING, CKC30/60 & CKRC30/60, IW6, HIGH RATIO, CENTRONIK / 3 CONDUIT ENTRIES, LARGE MOTOR, STANDARD ORIENTATION

This drawing and the information it contains are property of Rotork Controls Limited, and they will not be reproduced or disclosed, in whole or in part, without the prior written consent of Rotork.

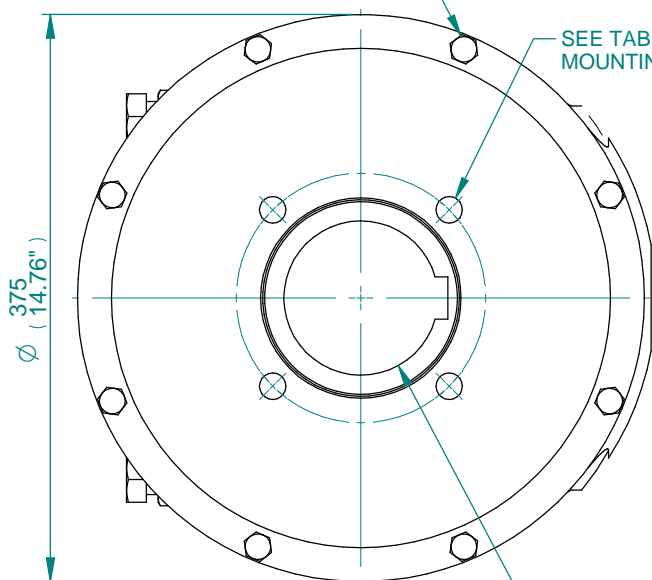
| | | | | |
|-----------|--------------------|---------------|--------------|-----------------|
| A4 | Doc Number | Ver No | Scale | Sheet No |
| | A4W6RHB000X | 1 | NTS | 1 of 2 |

| CONDUIT ENTRY HOLE | | |
|--------------------|--------|--------|
| Hole | Metric | NPT |
| A | M32 | 1 1/4" |
| B | M25 | 3/4" |
| C | M20 | 3/4" |



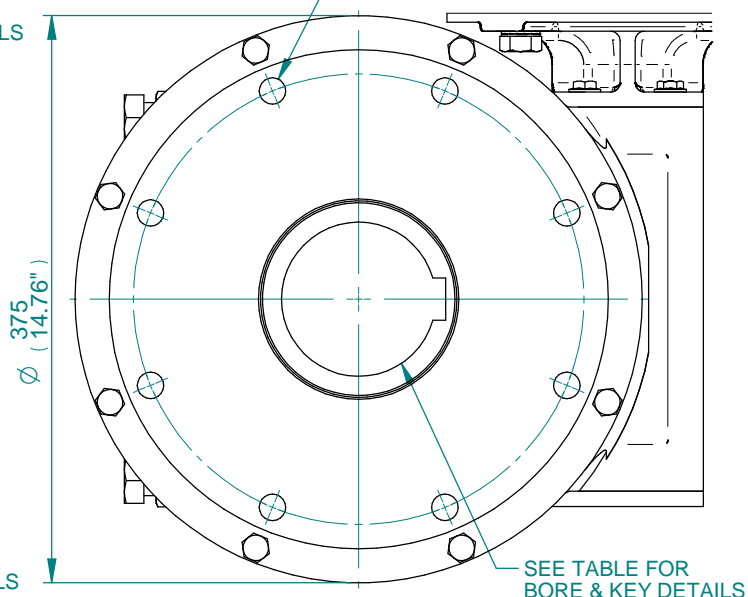
CONDUIT ENTRIES

MOUNTING HOLES CAN BE POSITIONED ON/OFF CENTRES BY REMOVING 8 BOLTS INDICATED AND REPOSITIONING



IW6 GEARBOX MOUNTING DETAILS FOR F16/FA16

SEE TABLE FOR MOUNTING DETAILS



IW6 GEARBOX MOUNTING DETAILS FOR F25/FA25 & F30/FA30

| BASEPLATE | X | Y | Z |
|--------------------|----|-----|-----|
| STANDARD THICKNESS | 70 | 113 | 139 |
| FILLED THICKNESS | 70 | 113 | 139 |
| WAFER THICKNESS | 93 | 136 | 162 |

| STD | MAX BORE SQ KEY | | MAX BORE RECTANGULAR KEY | |
|------------|-----------------|--------|--------------------------|---------|
| | BORE | KEY | BORE | KEY |
| BS4235 | - | - | 102 | 28X16 |
| BS46 | 3.625" | 1"SQ | 3.75" | 1"X3/4" |
| ANSI B17.1 | 3.75" | 7/8"SQ | 3.875" | 1"X3/4" |

| BASEPLATE DETAILS | | |
|-------------------|------------------|----------------------------------|
| TYPE | BASEPLATE | HOLE DETAILS (45° OFF CENTRES) |
| ISO F16 | STANDARD | 4 HOLES M20X20 (0.79") DEEP |
| | | ON Ø165.00 (Ø6.49") P.C. |
| FA16 | STANDARD | 4 HOLES 3/4"UNCX20 (0.79") DEEP |
| | | ON Ø165.00 (Ø6.49") P.C. |
| TYPE | BASEPLATE | HOLE DETAILS (22.5° OFF CENTRES) |
| ISO F25 | STANDARD | 8 HOLES M16X16 (0.63") DEEP |
| | | ON Ø254.00 (Ø10.00") P.C. |
| FA25 | STANDARD | 8 HOLES 5/8"UNCX16 (0.63") DEEP |
| | | ON Ø254.00 (Ø10.00") P.C. |
| ISO F30 | FILLED AND WAFER | 8 HOLES M20X30 (1.18") DEEP |
| | | ON Ø298.00 (Ø11.73") P.C. |
| FA30 | FILLED AND WAFER | 8 HOLES 3/4"UNCX30 (1.18") DEEP |
| | | ON Ø298.00 (Ø11.73") P.C. |



| | | |
|----------|--------|----------|
| Drawn | TAMIL | 10-05-17 |
| Checked | BHARAT | 10-05-17 |
| Approved | JOSE | 10-05-17 |

Title DIMENSIONAL DRAWING, CKC30/60 & CKRC30/60, IW6, HIGH RATIO, CENTRONIK / 3 CONDUIT ENTRIES, LARGE MOTOR, STANDARD ORIENTATION

This drawing and the information it contains are property of Rotork Controls Limited, and they will not be reproduced or disclosed, in whole or in part, without the prior written consent of Rotork.

| | | | | |
|-----------|--------------------|---------------|--------------|-----------------|
| A4 | Doc Number | Ver No | Scale | Sheet No |
| | A4W6RHB000X | 1 | NTS | 2 of 2 |