

- NOTE:
1. GEARBOX RATIOS: 200.7 : 1.
 2. GEARBOX BASEPLATE: F10/FA10, F12/FA12, F14/FA14 & F16/FA16.
 3. DIMENSIONS WITH "" INDICATE COVER REMOVAL ALLOWANCE
 4. THE INTERFACE PROVIDED FOR MOUNTING THE ACTUATOR OR SECOND STAGE GEARBOX ONTO THE VALVE SHOULD CONFORM TO GOOD ENGINEERING PRACTICES, ENSURING ADEQUATELY TOLERANCED LIMITS FOR PARALLELISM, PERPENDICULARITY AND CONCENTRICITY.
 5. ROTORK CANNOT BE HELD LIABLE FOR DAMAGE TO OUR EQUIPMENT CAUSED BY EXCESSIVE LOADING FROM COVER TUBES, HANDWHEEL AND HAND LEVER.

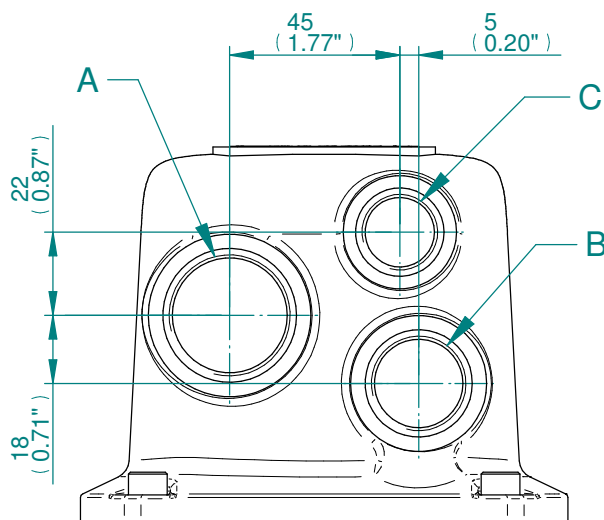
PARAMETER	VALUE	DESCRIPTION
DRAWING TYPE	A	INSTALLATION DRAWING
ACTUATOR	4	CK(R)C30/60
GEARBOX1	AF	AB1250M-PR4
GEARBOX2	NO	NO G.B.2
TERMINAL COVER	B	3 COND
MECHANISM / MOTOR	S	STD.MECH. / SMALL MOT.
HANDWHEEL / REAR / FRONT	0	STD.H.W./STD.REAR/STD.FRNT.
ORIENTATION	0	STD.ORIENT.

CK range	Drawn	AASHAY	08-07-19
	Checked	TAMIL	08-07-19
	Approved	JOSE	08-07-19

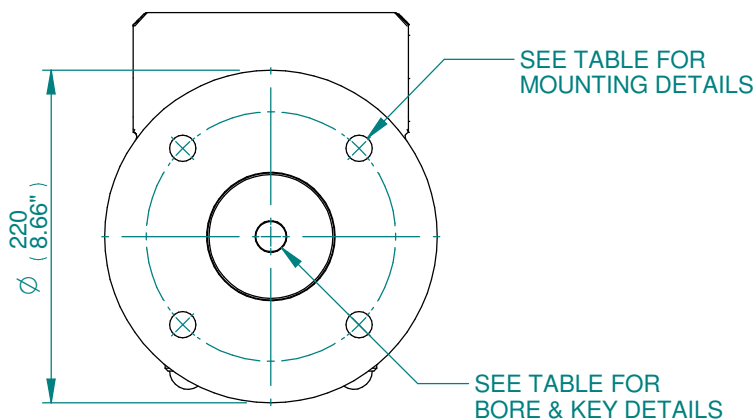
Title	DIMENSIONAL DRAWING, CKC30/60 & CKRC30/60, AB1250M-PR4,3 CONDUIT ENTRIES, SMALL MOTOR, STANDARD ORIENTATION
--------------	---

A4	Doc Number	Ver No	Scale	Sheet No
	A4AFN0BS00X	1	NTS	1 of 2

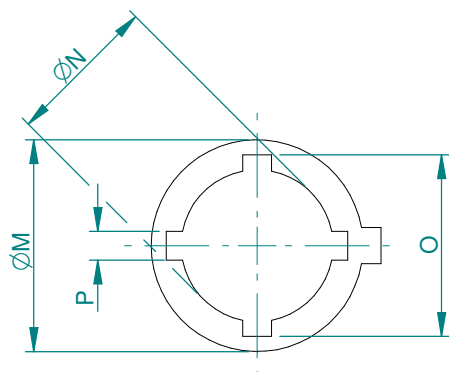
CONDUIT ENTRY HOLE		
Hole	Metric	NPT
A	M32	1 1/4"
B	M25	3/4"
C	M20	3/4"



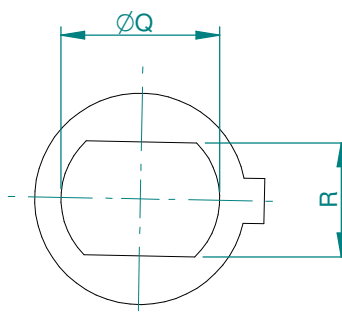
CONDUIT ENTRIES



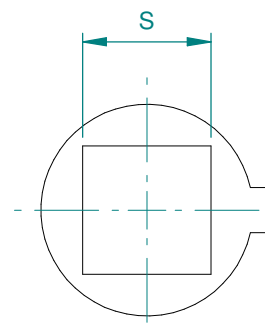
AB1250M-PR4 GEARBOX MOUNTING DETAILS



KEYED STEM



FLAT HEAD STEM



SQUARE STEM 90°

DIMENSIONS MAXIMUM (INSERTS)

TYPE	ØM	ØN	O	P	ØQ	R	S
AB1250M-PR4	60 (2.36)	44 (1.73)	50.6 (1.99)	12 (0.47)	48.2 (1.90)	36 (1.42)	36 (1.42)

STEM ACCEPTANCE IN ACCORDANCE TO STANDARD

BORE MACHINED IN	STANDARD	MIN BORE	RECT. KEY MAX BORE	RECT. KEY SIZE	SQ BORE MAX
QUADRANT	DIN 6885	Ø20	Ø65	18 x 11	□ 50
	BS46	Ø0.79"	Ø2.4771"	3/4 x 1/2	□ 1.97"
INSERT	DIN 6885	-	Ø40	12 x 9	□ 36
	BS46	-	Ø1.5733"	7/16 x 5/16	□ 1.42"

BASEPLATE DETAILS

TYPE	BASEPLATE	HOLE DETAILS (45° OFF CENTRES)
F10	STANDARD	4x M10 x 13 DEEP ON A Ø102P.C.
FA10		4x 3/8"UNC x 0.51" DEEP ON A Ø4"P.C.
F12		4x M12 x 16 DEEP ON A Ø125P.C.
FA12		4x 1/2"UNC x 0.63" DEEP ON A 4.95"P.C.
F14		4x M16 x 18 DEEP ON A Ø140P.C.
FA14		4x 5/8"UNC x 0.71" DEEP ON A Ø5.5"P.C.
F16		4x M20 x 18 DEEP ON A Ø165P.C.
FA16		4x 3/4"UNC x 0.71" DEEP ON A 6.5"P.C.



Drawn	AASHAY	08-07-19
Checked	TAMIL	08-07-19
Approved	JOSE	08-07-19

Title DIMENSIONAL DRAWING, CKC30/60 & CKRC30/60, AB1250M-PR4,3 CONDUIT ENTRIES, SMALL MOTOR, STANDARD ORIENTATION

This drawing and the information it contains are property of Rotork Controls Limited, and they will not be reproduced or disclosed, in whole or in part, without the prior written consent of Rotork.

A4	Doc Number	Ver No	Scale	Sheet No
	A4AFN0BS00X	1	NTS	2 of 2