

NOTE:

1. GEAR BOX RATIO : 34:1
2. GEAR BOX BASEPLATE : F07/FA07, F10/FA10, F12/FA12, F14/FA14 & F16/FA16.
3. DIMENSIONS WITH "*" INDICATE COVER REMOVAL ALLOWANCE
4. THE INTERFACE PROVIDED FOR MOUNTING THE ACTUATOR OR SECOND STAGE GEARBOX ONTO THE VALVE SHOULD CONFORM TO GOOD ENGINEERING PRACTICES, ENSURING ADEQUATELY TOLERANCED LIMITS FOR PARALLELISM, PERPENDICULARITY AND CONCENTRICITY.
5. ROTORK CANNOT BE HELD LIABLE FOR DAMAGE TO OUR EQUIPMENT CAUSED BY EXCESSIVE LOADING FROM COVER TUBES, HANDWHEEL AND HAND LEVER.

NOTA:

1. RELACIÓN DE REDUCTOR : 34:1
2. BRIDAS DE SALIDA REDUCTOR: F07 / FA07, F10 / FA10, F12 / FA12, F14 / FA14 y F16 / FA16.
3. COTAS CON "*" INDICAN LA DISTANCIA PARA DESMONTAR LAS TAPAS
4. LA INTERFAZ PROPORCIONADA PARA MONTAR EL ACTUADOR O LA CAJA DE ENGRANAJES DE SEGUNDA ETAPA EN LA VÁLVULA DEBERÍA HACERSE CON BUENAS PRÁCTICAS DE INGENIERÍA, ASEGURANDO LOS LÍMITES TOLERADOS ADECUADAMENTE PARA PARALELISMO, PERPENDICULARIDAD Y CONCENTRICIDAD.
5. ROTORK NO PUEDE SER RESPONSABLE POR DAÑOS A NUESTRO EQUIPO CAUSADOS POR CARGA EXCESIVA DE TUBOS DE CUBIERTA, VOLANTE DE MANO Y PALANCA DE MANO.

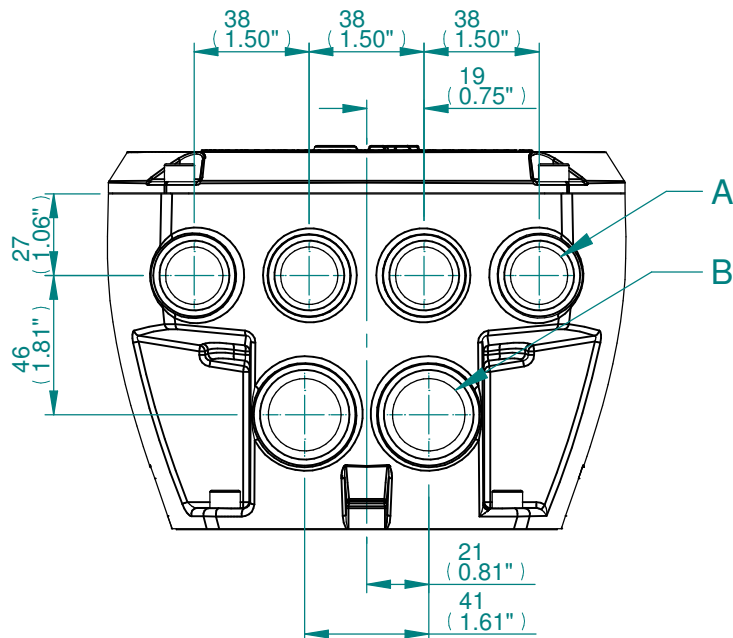
PARAMETER	VALUE	DESCRIPTION
DRAWING TYPE	A	INSTALLATION DRAWING
ACTUATOR	4	CK(R)C30/60
GEARBOX1	A5	AB550
GEARBOX2	N0	NO G.B.2
CENTRONIK / TERMINAL	D	CTK / DISC. MOD.
MECHANISM / MOTOR	S	STD.MECH/SMALL MOT.
HANDWHEEL / REAR / FRONT	0	STD.H.W./STD.REAR./STD.FRNT.
ORIENTATION	0	STD. ORIENT.

CK range	Drawn	TAMIL	19-07-17
	Checked	BHARAT	19-07-17
	Approved	JOSE	19-07-17

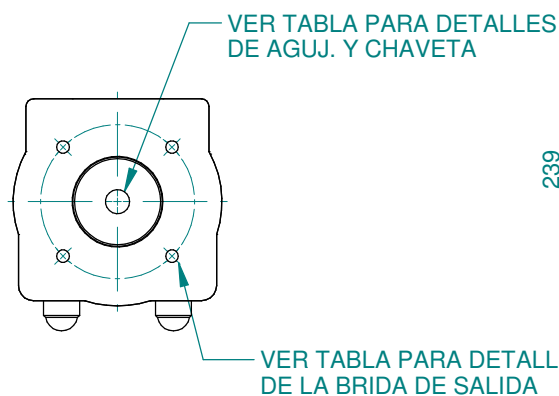
Title	DIMENSIONAL DRAWING, CKC30/60 & CKRC30/60, AB550, CENTRONIK DISCONNECT MODULE, SMALL MOTOR, STANDARD ORIENTATION.
--------------	-------------------------------------------------------------------------------------------------------------------

A4	Doc Number	Ver No	Scale	Sheet No
	A4A5N0DS00S	2	NTS	1 of 2

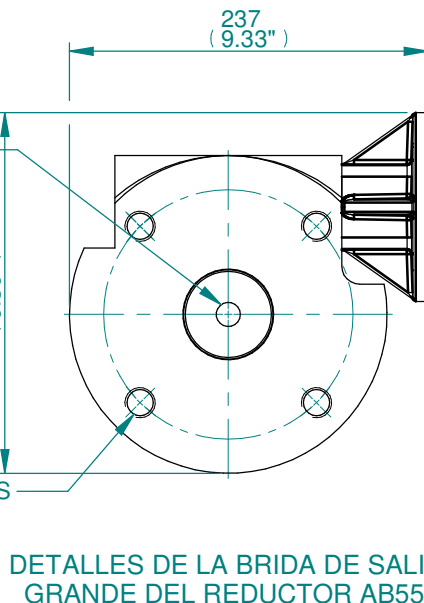
CONDUIT ENTRY HOLE		
Hole	Metric	NPT
A	4x M20	4x ¾"
B	2x M25	2x ¾"



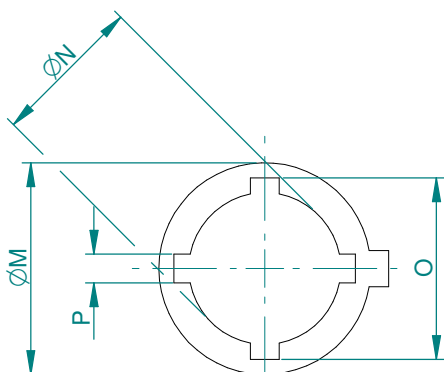
ENTRADAS DE CABLE



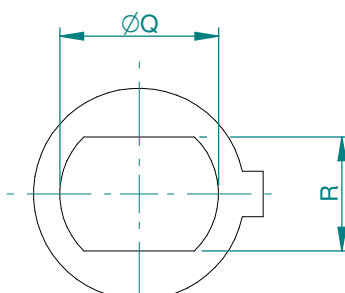
DETALLES DE LA BRIDA DE SALIDA STANDARD DEL REDUCTOR AB550



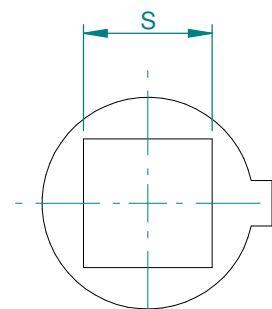
DETALLES DE LA BRIDA DE SALIDA GRANDE DEL REDUCTOR AB550



SALIDA ENCHAVETADA



SALIDA E/C



SALIDA CUADRADO

DIMENSIONS MAXIMUM (INSERTS)							
TYPE	ØM	ØN	O	P	ØQ	R	S
AB550M	45.3 (1.78)	30 (1.18)	36.6 (1.44)	8 (0.31)	36.2 (1.43)	27 (1.06)	27 (1.06)

BASEPLATE DETAILS			
TYPE	BASEPLATE	HOLE DETAILS (45° OFF CENTRES)	
F07	STANDARD	4x M8 x 13 DEEP ON A Ø70P.C.	
FA07		4x 5/16"UNC x 0.51" DEEP ON A Ø2.75"P.C.	
F10		4x M10 x 13 DEEP ON A Ø102P.C.	
FA10		4x 3/8"UNC x 0.51" DEEP ON A Ø4"P.C.	
F12		4x M12 x 16 DEEP ON A Ø125P.C.	
FA12		4x 1/2"UNC x 0.63" DEEP ON A 4.95"P.C.	
F14		4x M16 x 18 DEEP ON A Ø140P.C.	
FA14		4x 5/8"UNC x 0.71" DEEP ON A Ø5.5"P.C.	
F16		LARGE BASE	4x M20 x 18 DEEP ON A Ø165P.C.
FA16			4x 3/4"UNC x 0.71" DEEP ON A 6.5"P.C.

CK range
 Drawn: TAMIL 19-07-17
 Checked: BHARAT 19-07-17
 Approved: JOSE 19-07-17

Title DIMENSIONAL DRAWING, CKC30/60 & CKRC30/60, AB550, CENTRONIK DISCONNECT MODULE, SMALL MOTOR, STANDARD ORIENTATION.
 This drawing and the information it contains are property of Rotork Controls Limited, and they will not be reproduced or disclosed, in whole or in part, without the prior written consent of Rotork.

A4 Doc Number Ver No Scale Sheet No
A4A5N0DS00S 2 NTS 2 of 2