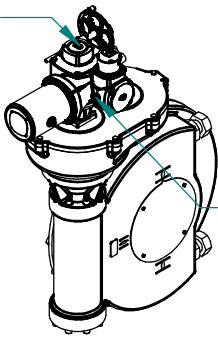
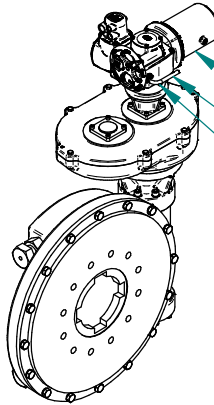


TOP COVER ASSY

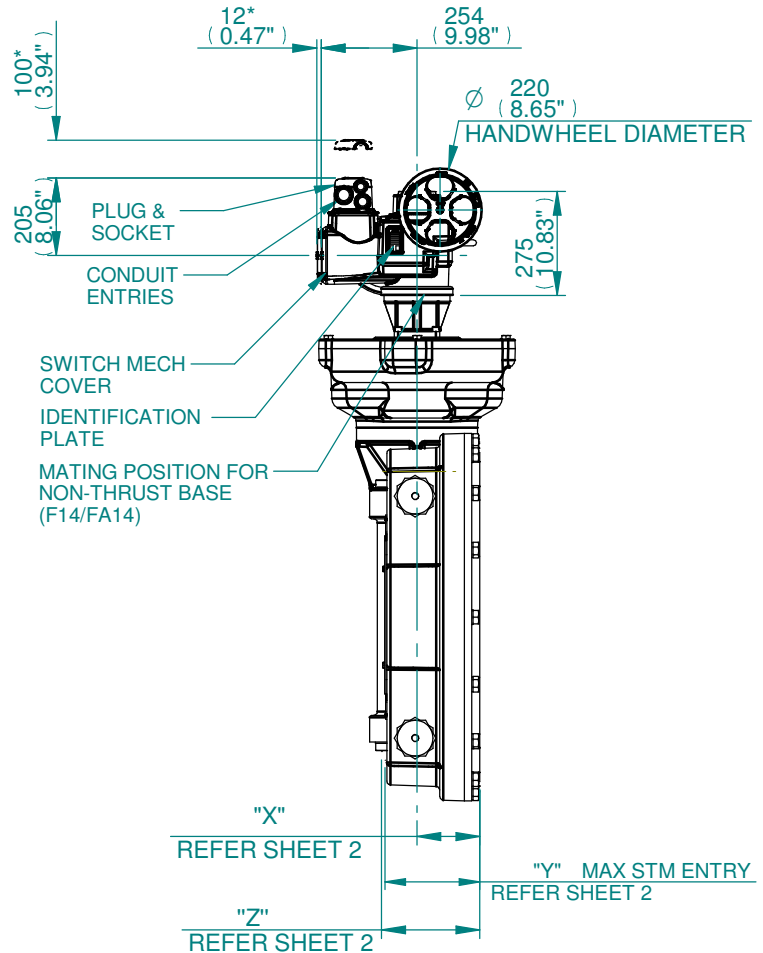
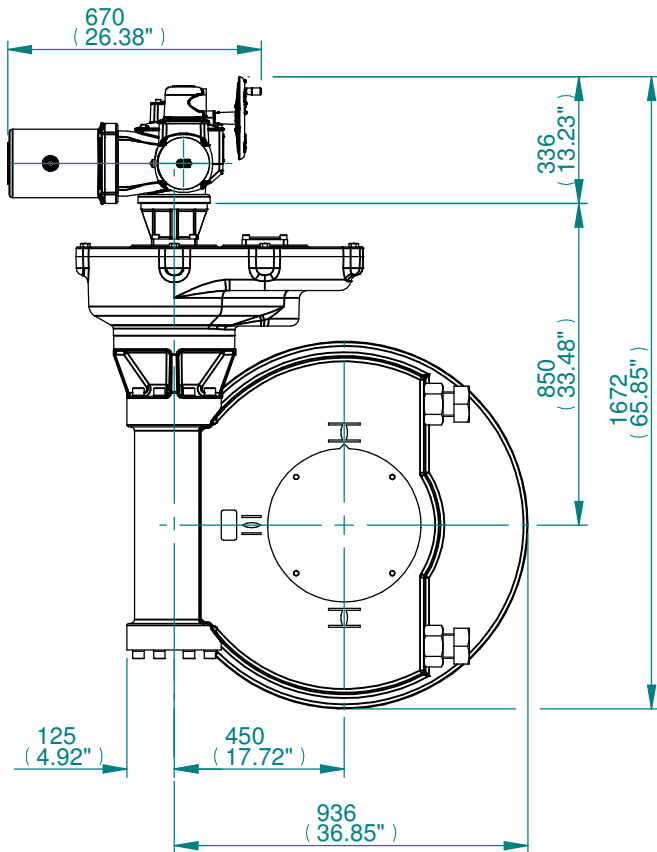
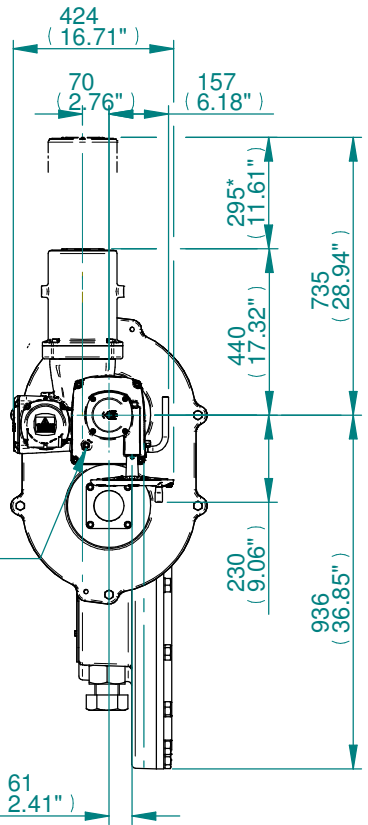


EARTHING POINT  
M6x1p x 10 DEEP



LARGE MOTOR  
HAND LEVER  
OIL DRAIN PLUG  
OIL FILLER PLUG

OIL FILLER PLUG



NOTE:

1. GEARBOX RATIOS : 240,360,480,610,720,960:1.
2. GEARBOX BASEPLATE: F40/FA40,F48/FA48,F60/FA60.
3. DIMENSIONS WITH "\*" INDICATE COVER REMOVAL ALLOWANCE
4. THE INTERFACE PROVIDED FOR MOUNTING THE ACTUATOR OR SECOND STAGE GEARBOX ONTO THE VALVE SHOULD CONFORM TO GOOD ENGINEERING PRACTICES, ENSURING ADEQUATELY TOLERANCED LIMITS FOR PARALLELISM, PERPENDICULARITY AND CONCENTRICITY.
5. ROTORK CANNOT BE HELD LIABLE FOR DAMAGE TO OUR EQUIPMENT CAUSED BY EXCESSIVE LOADING FROM COVER TUBES, HANDWHEEL AND HAND LEVER.

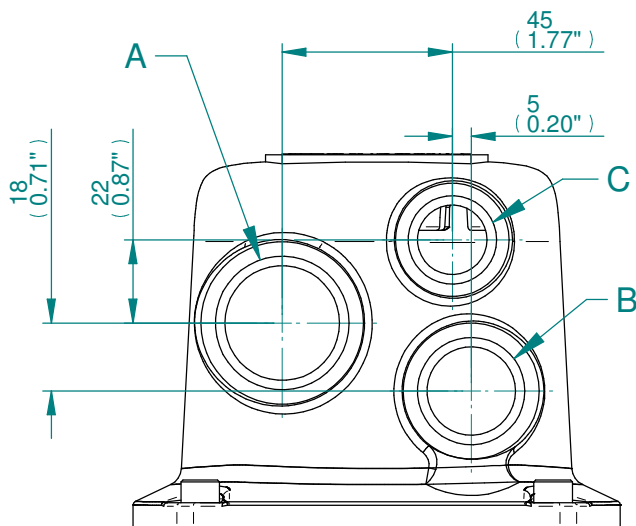
PARAMETER	VALUE	DESCRIPTION
DRAWING TYPE	A	INSTALLATION DRAWING
ACTUATOR	3	CK(R)C250/60
GEARBOX1	WD	IW13
GEARBOX2	RL	LOW RATIO
TERMINAL COVER	B	3 COND
MECHANISM / MOTOR	0	STD.MECH/LARGE MOT.
HANDWHEEL / REAR / FRONT	0	STD.H.W./STD.REAR/STD.FRNT.
ORIENTATION	0	STD.ORIENT.

<b>CK range</b>	Drawn	AASHAY	18-07-19
	Checked	TAMIL	18-07-19
	Approved	JOSE	18-07-19

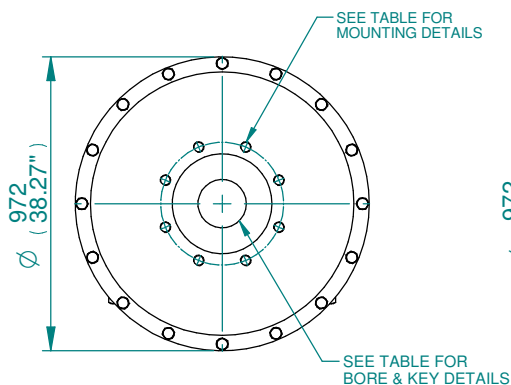
**Title** DIMENSIONAL DRAWING, CKC250/500 & CKRC250/500, IW13, LOW RATIO, 3 CONDUIT ENTRIES, LARGE MOTOR, STANDARD ORIENTATION.

<b>A4</b>	<b>Doc Number</b>	<b>Ver No</b>	<b>Scale</b>	<b>Sheet No</b>
	<b>A3WDRLB000X</b>	<b>1</b>	<b>NTS</b>	<b>1 of 2</b>

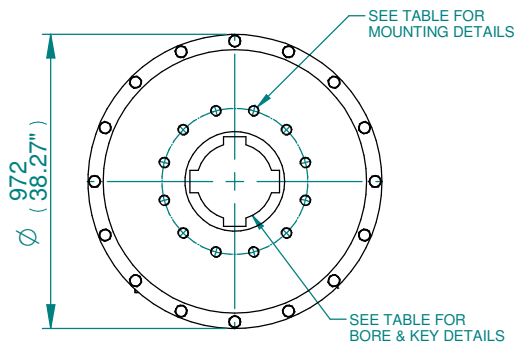
CONDUIT ENTRY HOLE		
Hole	Metric	NPT
A	M32	1 1/4"
B	M25	3/4"
C	M20	3/4"



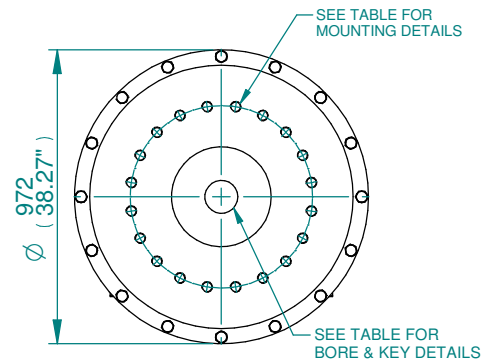
### CONDUIT ENTRIES



IW13 GEARBOX MOUNTING  
DETAILS FOR F40/FA40



IW13 GEARBOX MOUNTING  
DETAILS FOR F48/FA48



IW13 GEARBOX MOUNTING  
DETAILS FOR F60/FA60

BASEPLATE	X	Y	Z
STANDARD THICKNESS	166	251	260
FILLED THICKNESS	166	251	260
WAFER THICKNESS	166	251	260

STD	BASE	MAX BORE RECTANGULAR KEY		MAX BORE SQ KEY	
		BORE	KEY	BORE	KEY
BS4235	F40	272	63 x 32	-	-
BS46	F40	10"	2.5" x 1.625"	-	-
ANSI	F40	10.25"	2.5" x 1.75"	9.5"	2.5" x 2.5"
BS4235	F48 & F60	305	70 x 36	-	-
BS46	F48 & F60	12"	3" x 2"	-	-
ANSI	F48 & F60	12"	3" x 2"	11.75"	3" x 3"

BASEPLATE DETAILS		
TYPE	BASE PLATE	HOLE DETAILS (22.5 ° OFF CENTRES)
ISO F40	STANDARD	8 HOLES M36X38 (1.50") DEEP ON Ø406.00 (Ø15.98") P.C.
		8 HOLES 1.25"UNCX38 (1.50") DEEP ON Ø406.40 (Ø16.00") P.C.
ISO F48	STANDARD	12 HOLES M36X38 (1.50") DEEP ON Ø483.00 (Ø19.02") P.C.
		12 HOLES 1.25"UNCX38 (1.50") DEEP ON Ø482.6 (Ø19.00") P.C.
ISO F60	STANDARD	20 HOLES M36X38 (1.50") DEEP ON Ø603.00 (Ø23.74") P.C.
		20 HOLES 1.25"UNCX38 (1.50") DEEP ON Ø603.00 (Ø23.74") P.C.

<b>CK</b> range	Drawn	AASHAY	18-07-19
	Checked	TAMIL	18-07-19
	Approved	JOSE	18-07-19

**Title** DIMENSIONAL DRAWING, CKC250/500 & CKRC250/500, IW13, LOW RATIO, 3 CONDUIT ENTRIES, LARGE MOTOR, STANDARD ORIENTATION.

This drawing and the information it contains are property of Rotork Controls Limited, and they will not be reproduced or disclosed, in whole or in part, without the prior written consent of Rotork.

<b>A4</b>	Doc Number	Ver No	Scale	Sheet No
	<b>A3WDRLB000X</b>	<b>1</b>	<b>NTS</b>	<b>2 of 2</b>