

| CONDUIT ENTRY HOLE | | |
|--------------------|--------|--------|
| Hole | Metric | NPT |
| A | M32 | 1 1/4" |
| B | M25 | 3/4" |
| C | M20 | 3/4" |

- NOTE:
- THRUST BASE. PLEASE REFER TO THE TECHNICAL DATA SECTION OF BROCHURE FOR DETAILS OF MAXIMUM AXIAL THRUST RATINGS.
 - BASEPLATE DETAILS: F14/FA14.
 - DIMENSIONS WITH (*) INDICATE COVER REMOVAL ALLOWANCE
 - THE INTERFACE PROVIDED FOR MOUNTING THE ACTUATOR OR SECOND STAGE GEARBOX ONTO THE VALVE SHOULD CONFORM TO GOOD ENGINEERING PRACTICES, ENSURING ADEQUATELY TOLERANCED LIMITS FOR PARALLELISM, PERPENDICULARITY AND CONCENTRICITY.
 - ROTORC KANNOOT BE HELD LIABLE FOR DAMAGE TO OUR EQUIPMENT CAUSED BY EXCESSIVE LOADING FROM COVER TUBES, HANDWHEEL AND HAND LEVER.

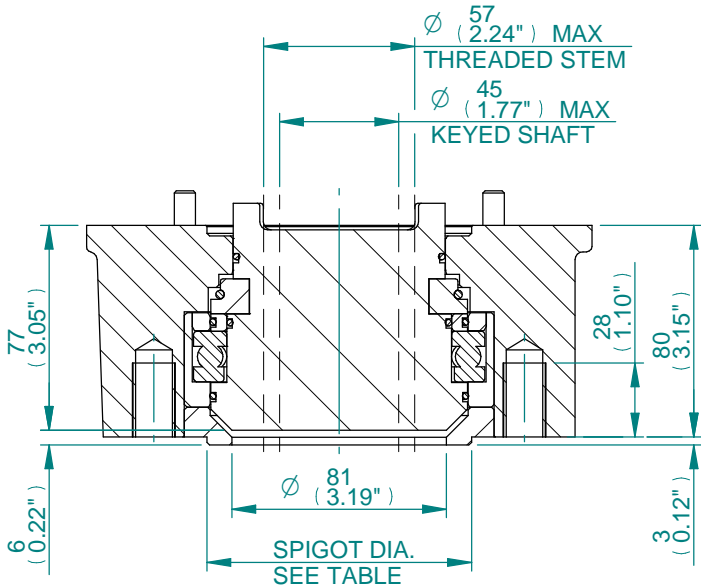
| PARAMETER | VALUE | DESCRIPTION |
|--------------------------|-------|------------------------------|
| DRAWING TYPE | A | INSTALLATION DRAWING |
| ACTUATOR | 3 | CK(R)250/500 |
| GEARBOX1 | 00 | NO G.B.1. |
| GEARBOX2 | N0 | NO G.B.2 |
| CENTORNIK / TERMINAL | S | SET/3 COND |
| MECHANISM / MOTOR | T | AID/SMALL MOT. |
| HANDWHEEL / REAR / FRONT | 0 | STD.H.W./STD.REAR./STD.FRNT. |
| ORIENTATION | 0 | STD. ORIENT. |

| | | | |
|-----------------|----------|--------|----------|
| CK range | Drawn | TAMIL | 24-04-18 |
| | Checked | BHARAT | 24-04-18 |
| | Approved | JOSE | 24-04-18 |

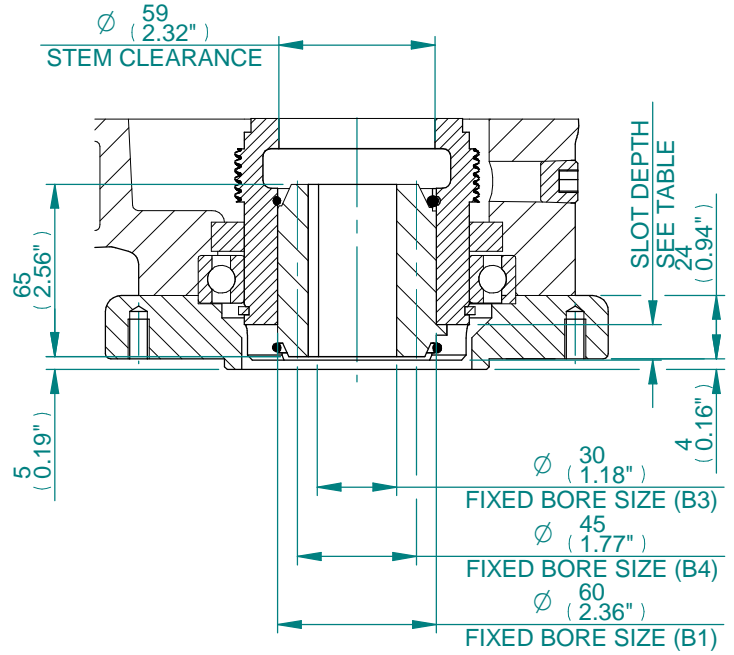
Title DIMENSIONAL DRAWING, CK250/500 & CKR250/500, 3 CONDUIT ENTRIES, AID / SMALL MOTOR, STANDARD ORIENTATION.

This drawing and the information it contains are property of Rotork Controls Limited, and they will not be reproduced or disclosed, in whole or in part, without the prior written consent of Rotork.

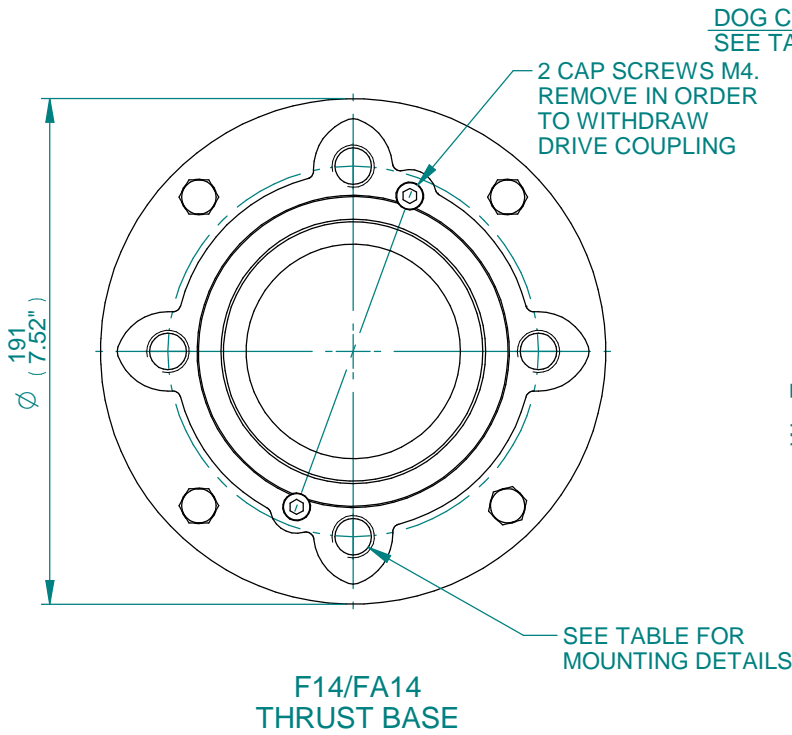
| | | | | |
|-----------|--------------------|---------------|--------------|-----------------|
| A4 | Doc Number | Ver No | Scale | Sheet No |
| | A300N0ST00X | 1 | NTS | 1 of 2 |



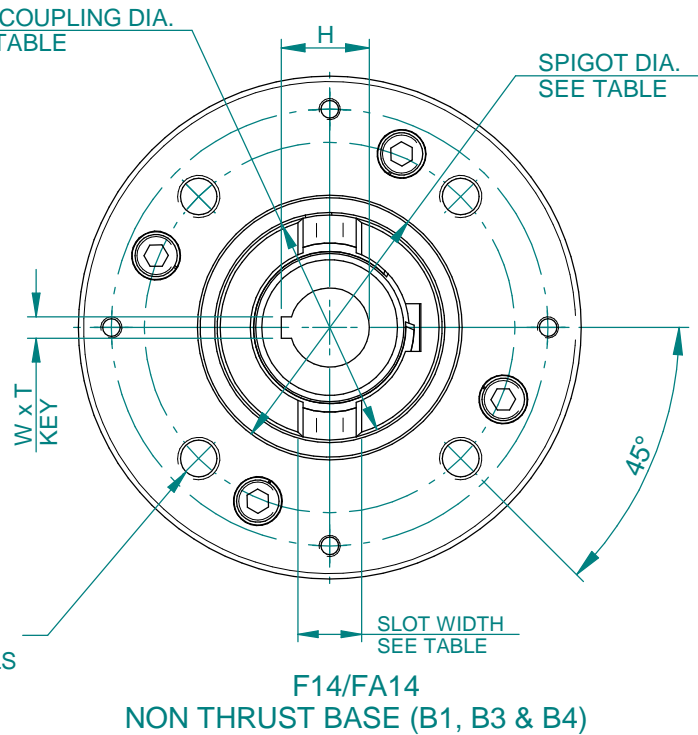
**TYPE "A"
COUPLING DETAILS**



**TYPE 'B1/B3/B4'
COUPLING DETAILS**



**F14/FA14
THRUST BASE**



**F14/FA14
NON THRUST BASE (B1, B3 & B4)**

| B1, B3 & B4 KEY DETAILS | |
|-------------------------|----------|
| DESCRIPTION | F14/FA14 |
| KEY (B1) WxT | 18x11 |
| KEY (B3) WxT | 8x7 |
| MAX. KEY (B4) WxT | 14x9 |
| H (B1) | 64.4 |
| H (B3) | 33.3 |
| H (B4) MAX | 48.8 |

| BASEPLATE DETAILS | | | |
|-------------------|-----------|----------------|--|
| TYPE | BASEPLATE | SPIGOT DIA. | HOLE DETAILS (45° OFF CENTRES) |
| ISO F14 | STANDARD | Ø99.964/99.910 | 4 HOLES M16X16 (0.63") DEEP ON Ø140.0 (Ø5.51") P.C. |
| | | Ø3.749"/3.742" | 4 HOLES 5/8"UNCx16 (0.63") DEEP ON Ø139.7 (Ø5.50") P.C. |

| DOG COUPLING DETAILS | |
|----------------------|------|
| SLOT WIDTH | 20 |
| SLOT DEPTH | 13.4 |
| DOG COUPLING | Ø85 |

| | | | |
|-----------------|----------|--------|----------|
| CK range | Drawn | TAMIL | 24-04-18 |
| | Checked | BHARAT | 24-04-18 |
| | Approved | JOSE | 24-04-18 |

Title DIMENSIONAL DRAWING, CK250/500 & CKR250/500, 3 CONDUIT ENTRIES, AID / SMALL MOTOR, STANDARD ORIENTATION.

This drawing and the information it contains are property of Rotork Controls Limited, and they will not be reproduced or disclosed, in whole or in part, without the prior written consent of Rotork.

| | | | | |
|-----------|--------------------|---------------|--------------|-----------------|
| A4 | Doc Number | Ver No | Scale | Sheet No |
| | A300N0ST00X | 1 | NTS | 2 of 2 |