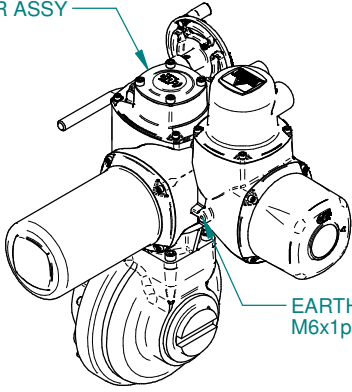
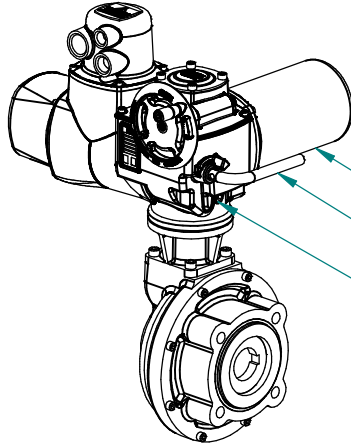


TOP COVER ASSY



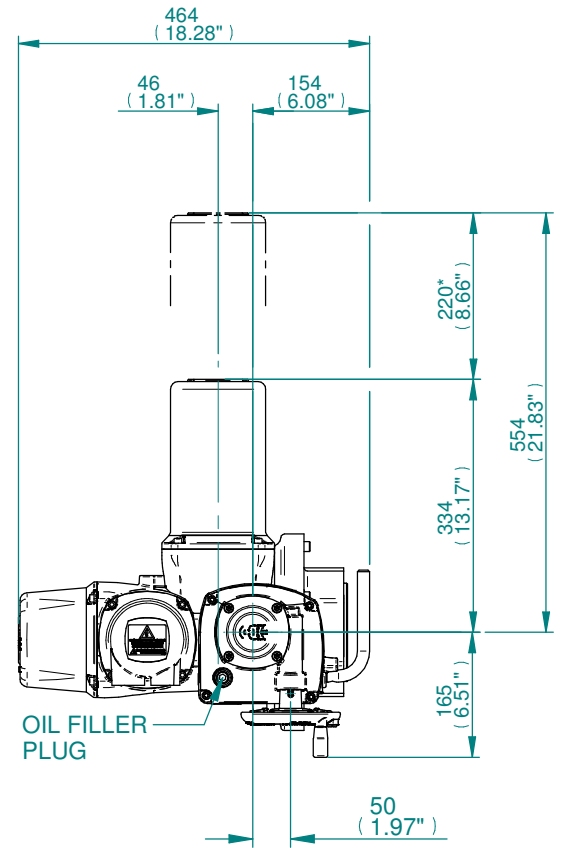
EARTHING POINT
M6x1p x 10 DEEP



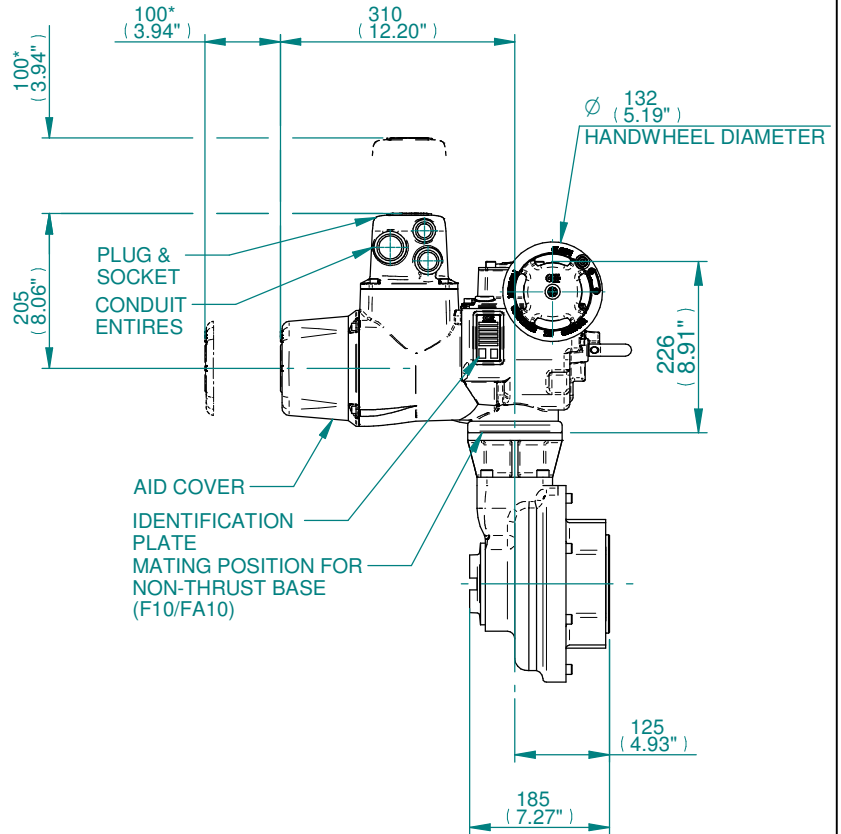
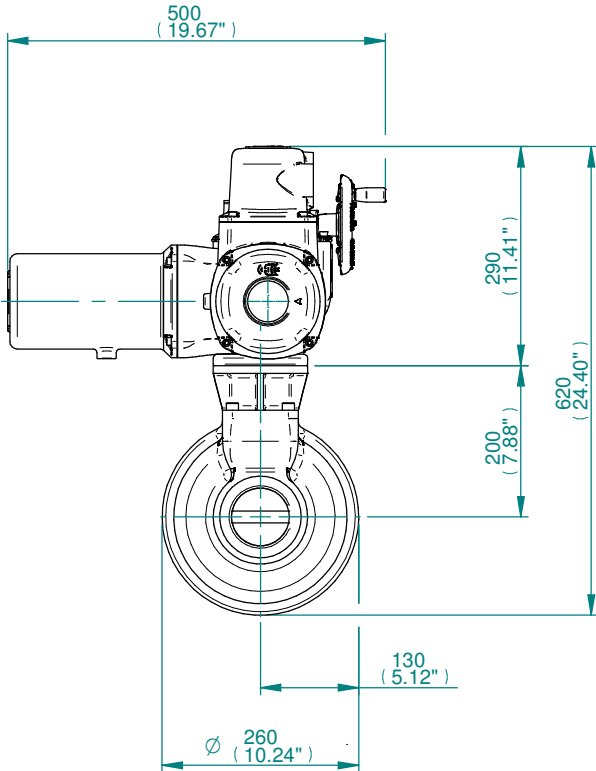
LARGE MOTOR

HAND LEVER

OIL DRAIN PLUG



OIL FILLER
PLUG



PLUG & SOCKET
CONDUIT
ENTRIES

AID COVER
IDENTIFICATION
PLATE
MATING POSITION FOR
NON-THRUST BASE
(F10/FA10)

NOTE:

1. GEARBOX RATIOS: 3:4 & 6:1.
2. GEARBOX BASEPLATE: F16/FA16, F25/FA25.
3. DIMENSIONS WITH "*" INDICATE COVER REMOVAL ALLOWANCE
4. THE INTERFACE PROVIDED FOR MOUNTING THE ACTUATOR OR SECOND STAGE GEARBOX ONTO THE VALVE SHOULD CONFORM TO GOOD ENGINEERING PRACTICES, ENSURING ADEQUATELY TOLERANCED LIMITS FOR PARALLELISM, PERPENDICULARITY AND CONCENTRICITY.
5. ROTORK CANNOT BE HELD LIABLE FOR DAMAGE TO OUR EQUIPMENT CAUSED BY EXCESSIVE LOADING FROM COVER TUBES, HANDWHEEL AND HAND LEVER.

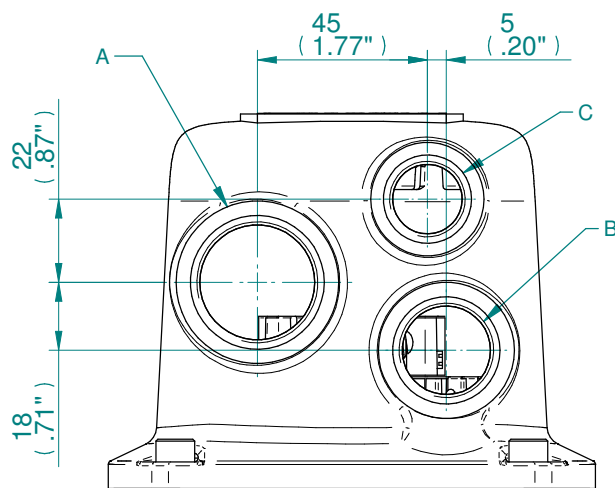
PARAMETER	VALUE	DESCRIPTION
DRAWING TYPE	A	INSTALLATION DRAWING
ACTUATOR	2	CK(R)120
GEARBOX1	B7	IB7
GEARBOX2	N0	NO G.B.2
TERMINAL COVER	B	3 COND
MECHANISM / MOTOR	A	AID/LARGE MOTOR
HANDWHEEL / REAR / FRONT	0	STD.H.W./STD.REAR/STD.FRNT.
ORIENTATION	0	STD.ORIENT.

CK range	Drawn	AASHAY 08-07-19
	Checked	TAMIL 08-07-19
	Approved	JOSE 08-07-19

Title	DIMENSIONAL DRAWING,CK120 & CKR120, IB7,3 CONDUIT ENTRIES,AID/LARGE MOTOR,STANDARD ORIENTATION
<small>This drawing and the information it contains are property of Rotork Controls Limited, and they will not be reproduced or disclosed, in whole or in part, without the prior written consent of Rotork.</small>	

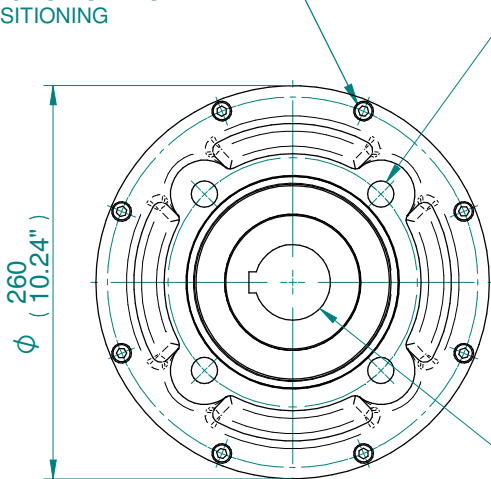
A4	Doc Number	Ver No	Scale	Sheet No
	A2B7N0BA00X	1	NTS	1 of 2

CONDUIT ENTRY HOLE		
Hole	Metric	NPT
A	M32	1 1/4"
B	M25	3/4"
C	M20	3/4"



CONDUIT ENTRIES

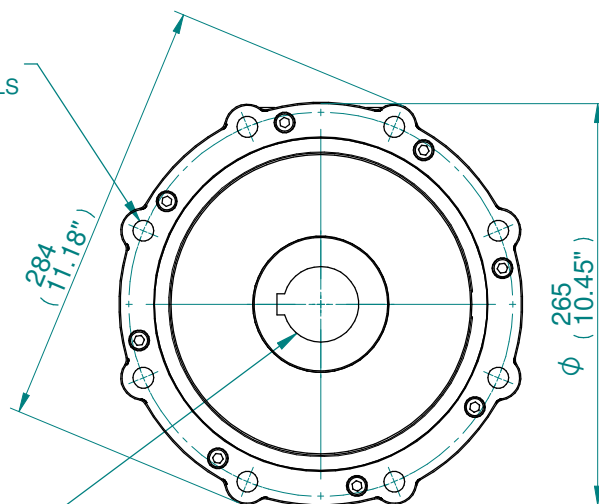
MOUNTING HOLES CAN BE POSITIONED ON/OFF CENTRES BY REMOVING 8 BOLTS INDICATED AND REPOSITIONING



IB7-F16/FA16 GEARBOX MOUNTING DETAILS

SEE TABLE FOR BASEPLATE DETAILS

SEE TABLE FOR BORE & KEY DETAILS



IB7-F25/FA25 GEARBOX MOUNTING DETAILS

MAX. STEM SCREW ACCEPTANCE DIA
73(2.750")

STD	MAX BORE SQ KEY		MAX BORE RECTANGULAR KEY	
	BORE	KEY	BORE	KEY
BS4235	-	-	68.0	20x12
BS46	2.500"	5/8" SQ	2.625"	3/4"x1/2"
ANSI B17.1	2.500"	5/8" SQ	2.625"	5/8"x7/16"

BASEPLATE DETAILS			
TYPE	BASEPLATE	SPIGOT DIA.	HOLE DETAILS (45° OFF CENTRES)
ISO F16	STANDARD	Ø129.95-0.05	4 HOLES M20x25 (0.98") DEEP
		(Ø5.116"-0.002"	ON Ø165.0 (Ø6.50") P.C.
		Ø126.87-0.25	4 HOLES 3/4"UNCx25 (0.98") DEEP
FA16		(Ø4.995"-0.010"	ON Ø165.1 (Ø6.50") P.C.
TYPE	BASEPLATE	SPIGOT DIA.	HOLE DETAILS (22.5° OFF CENTRES)
ISO F25	STANDARD	Ø199.95-0.05	8 HOLES M16X20 (0.79") DEEP
		(Ø7.872"-0.002"	ON Ø254.0 (Ø10.00") P.C.
		Ø152.25-0.05	8 HOLES 5/8"UNCX20 (0.79") DEEP
FA25		(Ø5.994"-0.002"	ON Ø254.4 (Ø10.00") P.C.

CK range	Drawn	AASHAY	08-07-19
	Checked	TAMIL	08-07-19
	Approved	JOSE	08-07-19

Title DIMENSIONAL DRAWING,CK120 & CKR120, IB7,3 CONDUIT ENTRIES,AID/LARGE MOTOR,STANDARD ORIENTATION

This drawing and the information it contains are property of Rotork Controls Limited, and they will not be reproduced or disclosed, in whole or in part, without the prior written consent of Rotork.

A4	Doc Number	Ver No	Scale	Sheet No
	A2B7N0BA00X	1	NTS	2 of 2