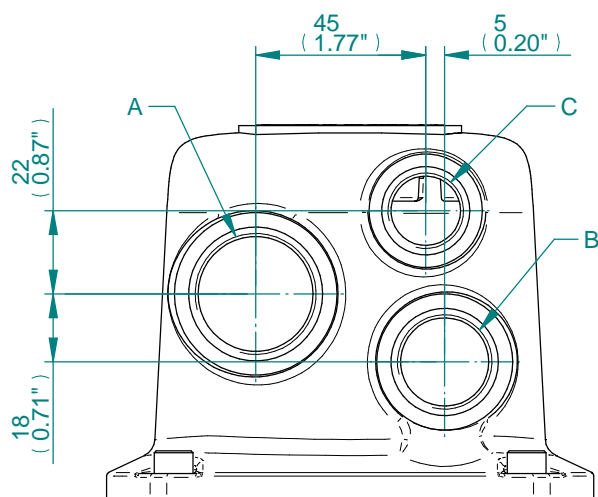
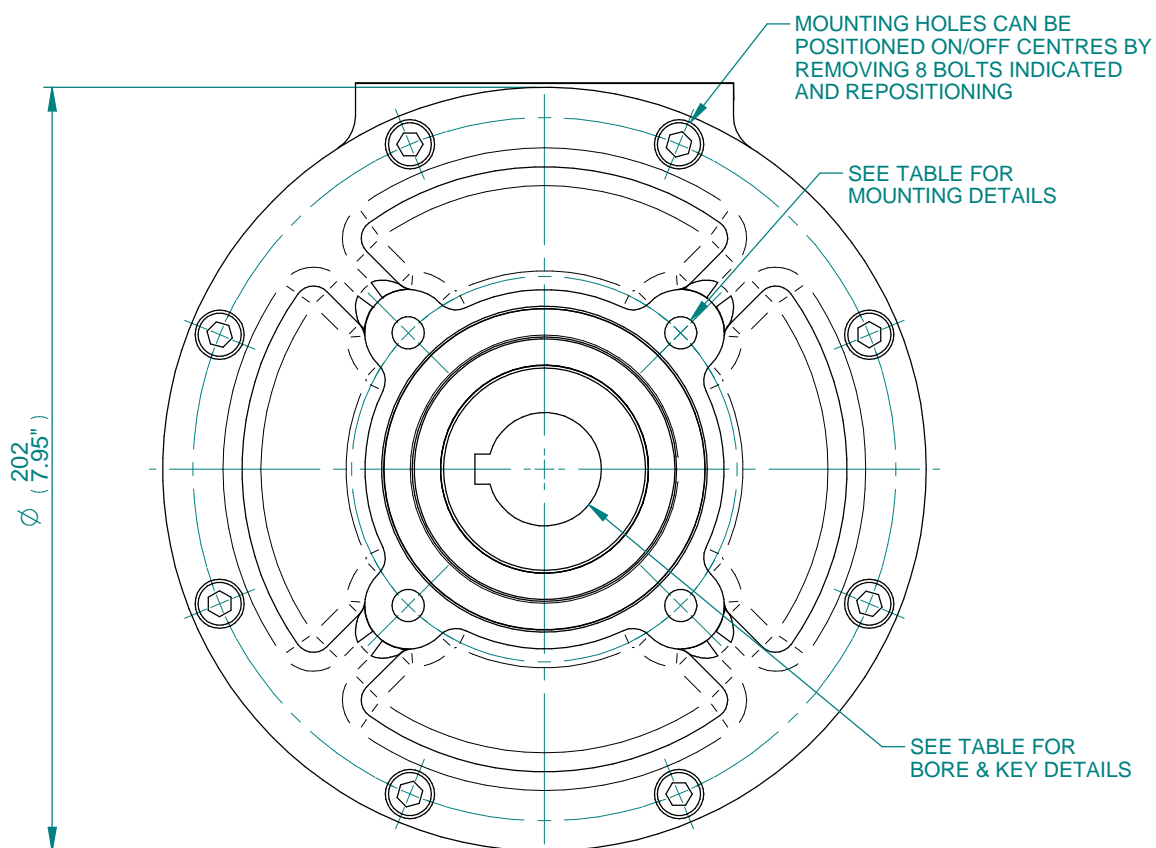




CONDUIT ENTRY HOLE		
Hole	Metric	NPT
A	M32	1 1/4"
B	M25	3/4"
C	M20	3/4"



CONDUIT ENTRIES



IB4 GEARBOX MOUNTING DETAILS

MAX. STEM SCREW ACCEPTANCE DIA
45 (1.75")

STD	MAX BORE SQ KEY		MAX BORE RECTANGULAR KEY	
	BORE	KEY	BORE	KEY
BS4235	-	-	40.0	12x8
BS46	1.500"	3/8" SQ	1.625"	7/16"x5/16"
ANSI B17.1	1.500"	3/8" SQ	1.625"	3/8"x1/4"

BASEPLATE DETAILS		
TYPE	BASEPLATE	HOLE DETAILS (45° OFF CENTRES)
ISO F10	STANDARD	4 HOLES M10x15 (0.59") DEEP ON Ø102.0 (Ø4.02") P.C.
FA10		4 HOLES 3/8"UNCx15 (0.59") DEEP ON Ø101.6 (Ø4.00") P.C.

<b>CK</b> range	Drawn	TAMIL	12-05-17
	Checked	BHARAT	12-05-17
	Approved	JOSE	12-05-17

**Title** DIMENSIONAL DRAWING, CK30/60 & CKR30/60, IB4, 3 CONDUIT ENTRIES, LARGE MOTOR, STANDARD ORIENTATION

This drawing and the information it contains are property of Rotork Controls Limited, and they will not be reproduced or disclosed, in whole or in part, without the prior written consent of Rotork.

<b>A4</b>	Doc Number	Ver No	Scale	Sheet No
	<b>A1B4N0S000X</b>	<b>2</b>	<b>NTS</b>	<b>2 of 2</b>