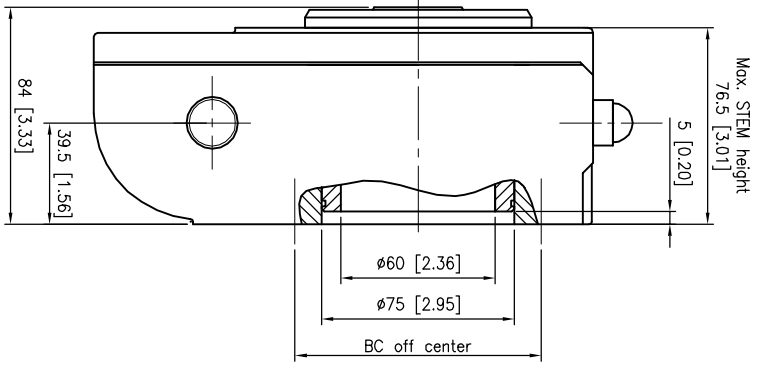


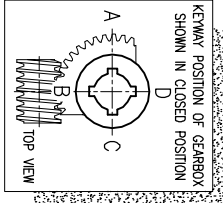
\*\* Maximum available dimensions acc iso 5211



**DESCRIPTION**  
 Travel : -5° to 95° adjustment  
 Ratio : 40 : 1  
 Turns to Close : 10  
 Weight : 5.4 Kg (11.9 Lb) Excl Handwheel

**MOUNTINGHOLES**  
 Bolt Circle : Min. Ø 102 [4.02] (Off Center) Max. Ø 140 [5.51]  
 Acc. ISO 5211 : F10 - F12 / F14  
 Bore : Min. Ø16 [0.63] - Max. Ø44 [1.73]

**TORQUE**  
 Max. Output : 1500 Nm (13200 lbf in.)  
 Max. Input : 125 Nm (1100 lbf in.)  
 M.A. : 12 ± 10%

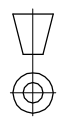


**rotork-gears**

Nijverheidstraat 25  
 7581 PV Loosdrecht  
 The Netherlands

**Gearbox 232-14 F10-F12/F14 (prep. for insert)**

THIS DOCUMENT IS PROPERTY OF ROTORK GEARS. NEITHER THIS OR ITS CONTENT MAY BE COPIED OR USED IN ANY OTHER WAY WITHOUT THE INTEREST OF ROTORK GEARS. ACCEPTANCE OF THIS DOCUMENT SHALL CONSTITUTE ACKNOWLEDGEMENT OF THE FOREGOING CONDITIONS



Drawn : N.M

Date : 09-02-07

Dwg. Nr.: D232-14

Rev.: 00

Contents Subject to change without notice.